



2016

REPORT



LEITNER ropeways

Technology that transports you to another world.

LEITNER[®]
ropeways

LEITNER ropeways was able to prove its unmistakable strengths again in 2016. From products for alpine applications to urban mobility solutions – the company is now making its mark on the map of ropeways around the world more clearly than ever before. This is due in part to current projects in no less than 11 countries, which are an expression of LEITNER ropeways' ambitious technology, innovation, design and comfort. The centerpiece of many ropeways is the LEITNER DirectDrive, still setting standards today after 15 years of pointing the way forward for drives. 24 new units of the industry leading drive – developed, produced and installed on-site by LEITNER ropeways – were commissioned around the world and are now impressing customers and users with four unbeatable attributes: reliability, energy-efficiency, eco-friendliness and low noise.

Besides the trouble-free, high-performance and energy-efficient operation, LEITNER ropeways continues to focus on unique products and outstanding quality in esthetics and design. For example, the LEITNER Premium Chair is not just eye-catching as seen in the three systems installed in 2016, it also offers outstanding comfort. 2016 impressively confirmed that LEITNER ropeways has its finger firmly on the pulse and meets its customers' needs exactly. That is the best drive for a successful 2017.



Predazzo / IT



Schladming / AT

2016 in retrospect

ITALY

Innovations for mountains and cities.

A new GD10 gondola lift at Plose, which replaced two chairlifts, offers class-leading comfort. As of the start of the winter season, the first two 8-seater chairlifts in Italy were commissioned with the CD8C Gran Paradiso in Val Gardena and CD8C Enzian in Racines – including car-style LEITNER Premium Chairs covered in genuine leather. The new Portados GD8 gondola lift is a real upgrade for the famous Sellaronda route in the Dolomites, while two 10-passenger gondola lifts were built at the popular tourist destination Bellamonte in the Val di Fiemme. The new Laner Telemix system boosts the comfort and capacity in the Obereggen ski resort. Two GD10 gondola lifts were also installed in the Roccaraso ski

resort in Abruzzo. Two real highlights for two special cities: The historic urban ropeway to Castel San Pietro in Verona has been replaced by a modern inclined ropeway, and in Pisa, the PisaMover links the Galileo Galilei Airport to the central railway station.

AUSTRIA

Bigger, faster and better.

The Eisgratbahn gondola lift was opened on the Stubai Glacier. It is the longest 3S gondola lift in the Alps and also the world's first tricable gondola lift in two sections with non-stop operation. This project of superlatives is rounded off by Pininfarina-designed Symphony gondolas, which offer true luxury with real glass panoramic windows, genuine leather seats and WiFi. In Gerlos in the Zillertal valley, guests can take the new Dorfbahn GD10 gondola lift straight from the village to the ski resort at Isskogel. That makes waiting times to enter the ski resort a thing of the past. Near the summit of Planai in Schladming, an 8-seater chairlift with bubbles and child restraints boosts the transport capacity and boasts an impressively efficient and silent drive system.

GERMANY AND FRANCE

Première for a premium product.

The new Bierenwangbahn ropeway was opened at Fellhorn, in the Kleinwalsertal-Oberstdorf holiday region. In the first 6-seater chairlift with LEITNER Premium Chairs in Germany, seat heating, bubbles and the proven child restraint system provide state-of-the-art comfort. In Le Corbier, France, the two new 6-seater chairlifts Charvin Express and Voie Lactée – LEITNER's 100th system in France – make journeys in the ski resort modern, safe and comfortable with the DirectDrive technology. Two new installations are in operation in Chamonix, a ski resort steeped in tradition, with the 6-seater La Parsa chairlift offering an impressive view of Mont Blanc.



Cabárceno / ES

SCANDINAVIA

Market leader in Scandinavia.

Four new systems were installed in Norway and Sweden. In Trysil, Norway's largest ski resort, the new CD6C Skihytta Ekspress is winning new fans with bubbles, seat heating and vibration dampers. Three new systems were commissioned in Sweden. The popular Kungsberget destination near Stockholm is now more attractive than ever thanks to the Kungsliften CD8 chairlift, which can transport up to 4,000 passengers per hour. The Stöten 6-seater chairlift, in the family ski resort of the same name near the Norwegian border, is the fastest and longest chairlift in the Dalarna province. In the Tännålen ski resort, the Hamrafjället 6-seater chairlift boosts the capacity to 2,600 passengers per hour.

SPAIN, POLAND AND TURKEY

Top-drawer tourist attractions.

In the Spanish nature reserve of Cabárceno, guests have been gliding over gorillas and elephants in comfortable gondolas since 2016. The ropeway consists of two independent gondola lifts. One forms a triangle with three angle stations, and supports that have roller batteries on one side only. That means the gondolas all travel counterclockwise using just one side of the supports. In the Polish ski resort of Czarna Góra, the Czarna Góra Express 6-seater chairlift with the striking yellow bubbles has become a real attention-grabber, while 4-seater chairlifts Cambasi I + II are central components of a new ski resort near the Turkish city of Ordu.



Mexico City / MX

MEXICO AND MALAYSIA

Safe in the city, to spectacular heights.

The first urban ropeway in Mexico was built in Mexico City, with President Enrique Peña Nieto even attending the official opening. The gondola lift goes a long way toward solving the traffic problem in the densely populated district of Ecatepec de Morelos. The ropeway is in operation for 17 hours a day and provides large numbers of students with a reliable and safe way of getting to school. The Malaysian Genting Highlands Resort is situated at 1,800 m above sea level, and welcomes 20 million visitors each year. Visitors can levitate over the landscape and enjoy impressive views of the tropical rain forest in the Awana Skyway's 99 modern 10-passenger gondolas – ten of which have glass floors.



Fügen / AT

Photo: BESTO ZT GmbH, www.BESTO.at



Photo: Dominik Butzmann

Berlin / DE

OUTLOOK FOR 2017

WINTER SPORTS

The unique LEITNER DirectDrive, and advancing its development, will continue to play a key role in 2017. The focus will be on innovative stations and the new Diamond EVO gondola. Pininfarina will elevate both products to a higher level. LEITNER ropeways and the design studio have developed a new functional design for stations, making them safer and easier to maintain. The Diamond EVO gondola – EVO stands for Evolution – offers plenty of additional comfort. The main frame, based on the Symphony gondola, will be given a new external profile, and will also be available with sliding doors along the entire face. A fascinating outlook in every way!

Major projects in the heartland of winter sports.

In the Zillertal valley, winter sports enthusiasts will in future be able to travel directly from Fügen to the ski resort with the Spieljochbahn 10-passenger gondola lift. The DirectDrive-equipped system with Diamond EVO gondolas boosts comfort, speed und transport capacity. Also in Fügen, another GD10 gondola lift will replace a chairlift, and the Wimbachexpress in Kaltenbach, which uses an identical design, will give access to a new area within the ski resort. In addition to numerous new projects in Poland, the Czech Republic and Slovakia, LEITNER ropeways will also focus on Germany. In Berchtesgaden, two 6-seater chairlifts with colorful bubbles will be installed, and a 10-passenger gondola lift with two separate sections will add a new highlight.

TOURISM AWAY FROM THE PISTES

Gliding over gardens, floating from the beach to the castle.

Another highlight is the “Gärten der Welt” ropeway, which lets visitors see the International Garden Show in Berlin from an entirely new perspective. The wheelchair-accessible system is an experience and a means of transportation rolled into one as it provides a link to the U5 subway line, allowing the exhibition site to be reached quickly from the city center. A further outstanding project is being built in the north of Mexico: In just five minutes, the 8-passenger gondola lift takes visitors to the top of Cerro de las Noas mountain. Departing from the center of Torreón city, the new ropeway travels directly to the monumental statue of Christ with an elevation gain of 138 meters. An 8-passenger gondola lift in Alanya, Turkey, will certainly be a special experience. It runs from the beach directly to the fascinating ruins of Alanya Castle.

URBAN PASSENGER TRANSPORT

Symbolic in Southern Europe, unique in Eastern Asia.

A project with a special significance will be developed in Sarajevo. A 10-passenger gondola lift will replace the old Trebevic ropeway, which became world-famous during the 1984 Olympic Games. The ropeway leads from the center of the Bosnian capital to the 1,160 meter high summit of Trebevic mountain. That will make the installation, which was damaged during the war years, history. The area was not declared mine-free until 2010, laying the foundation stone for this fascinating new building. In the South Korean city of Sacheon, a ropeway will run at lofty heights from an island over mountain peaks to a nature reserve. It will turn the thrilling topography into a unique tourist attraction. For extra wind resistance, the project will be implemented as a bicable aerial ropeway.

**Examples of
365 working days ...**





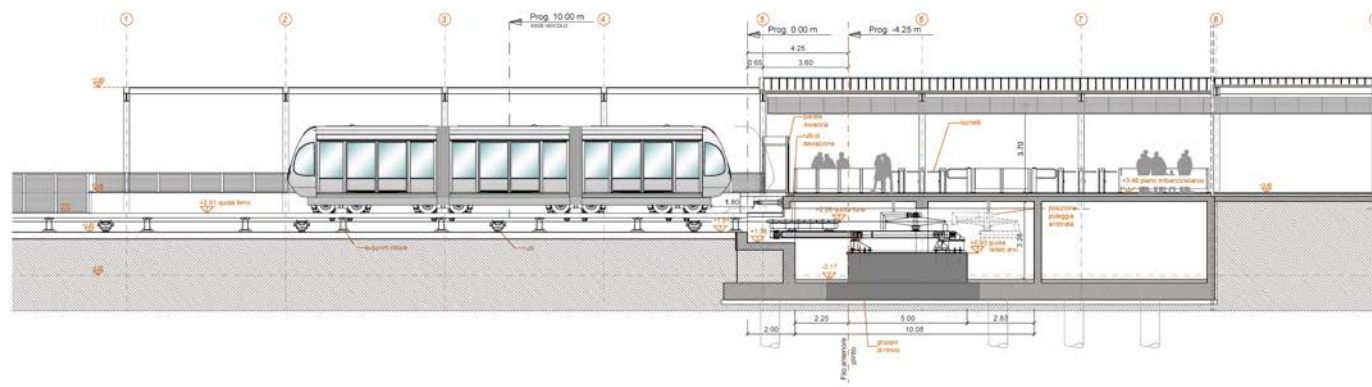
MM100 PISAMOVER

Pisa / IT

Inclined length	1760 m	Power	1000 kW
Vertical rise	6 m	Total number of vehicles	2
Transport capacity	1132 p/h	Total number of towers	0

The MiniMetro PisaMover connects the "Galileo Galilei" airport to the "Centrale" station in Pisa. LEITNER ropeways succeeded in winning the contract to build the PisaMover in a public-private-partnership project together with the Italian construction company Condotte d'Acqua. The project includes the planning, construction and operation of the

MiniMetro and a car park included in the project. The journey, almost 2 kilometers in length, is completed in just five minutes, including a stop at the commuter car park with 1,400 parking spaces. The parties involved expect to transport roughly two million passengers each year.







TD32 EISGRATBAHN I+II

Neustift (Stubai) / AT

Eisgratbahn I

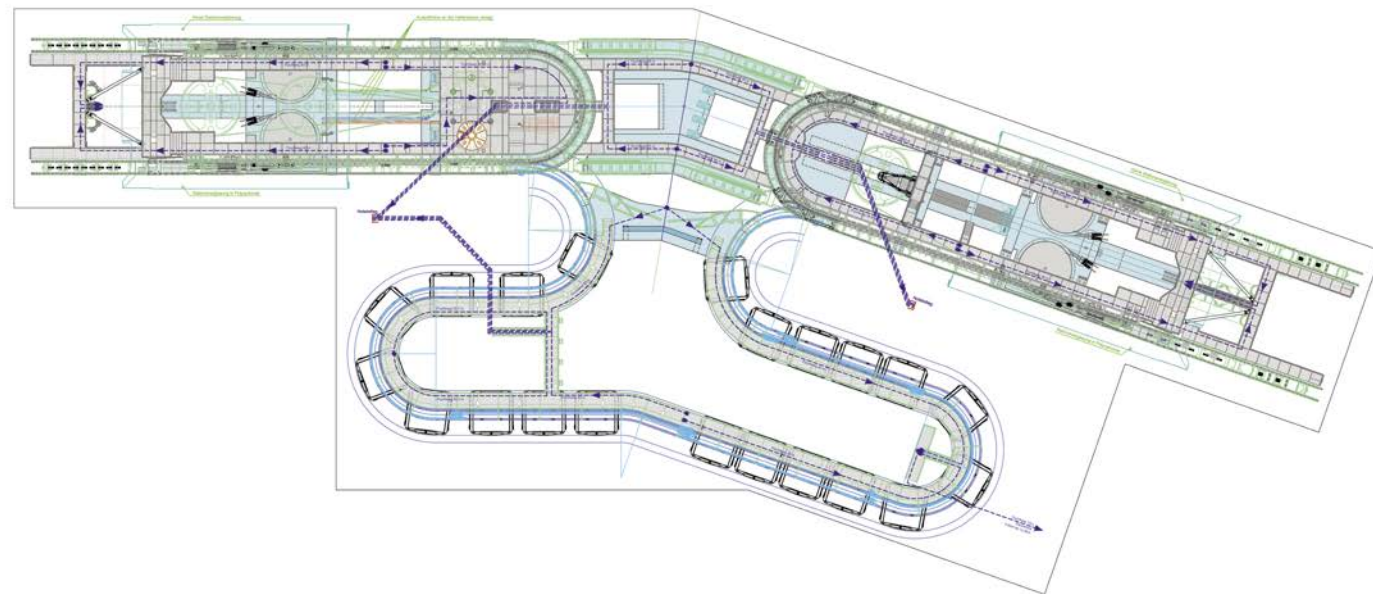
Inclined length	2437 m
Vertical rise	594 m
Transport capacity	3.014 p/h
Power	997 kW
Total number of vehicles	25
Total number of towers	4

Eisgratbahn II

Inclined length	2249 m
Vertical rise	594 m
Transport capacity	3.014 p/h
Power	997 kW
Total number of vehicles	23
Total number of towers	3

The longest 3S gondola lift in the Alps and the world's first tricable gondola lift in two sections featuring non-stop operation – these are just some of the highlights of the new gondola lift on the Stubai Glacier. The Eisgratbahn gondola lift represents a new generation of technology. Construction was completed in just 16 months and it is the perfect synthesis of innovative technology and modern design.

This marks the first appearance of the elegant new “Symphony” cabins based on a concept from Pininfarina. Modern contours, the spacious boarding area, the panoramic windows featuring genuine glass, real leather seats, and Wi-Fi in all cabins ensure a one-of-a-kind ride experience. This ropeway is also the first tricable gondola lift in the world to feature the LEITNER DirectDrive.







GD10 ECATEPEC I+II

Ecatepec / MX

Ecatepec I

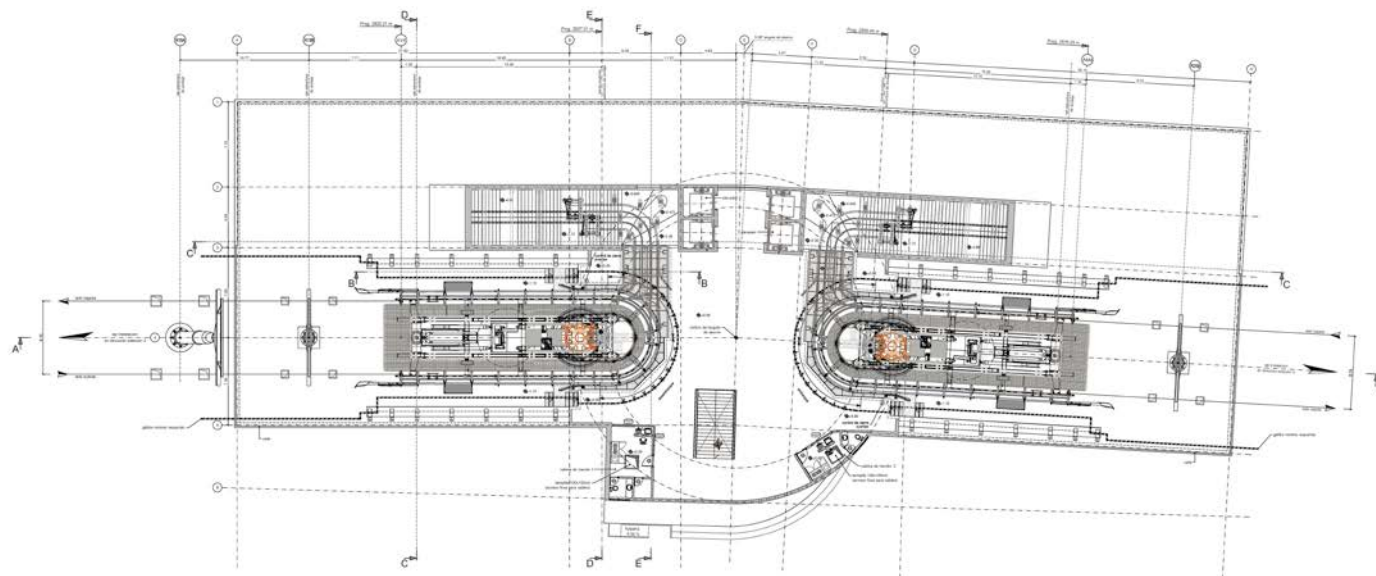
Inclined length	2901 m
Vertical rise	52 m
Transport capacity	3000 p/h
Power	692 kW
Total number of vehicles	107
Total number of towers	20

Ecatepec II

Inclined length	1787 m
Vertical rise	242 m
Transport capacity	3000 p/h
Power	640 kW
Total number of vehicles	75
Total number of towers	16

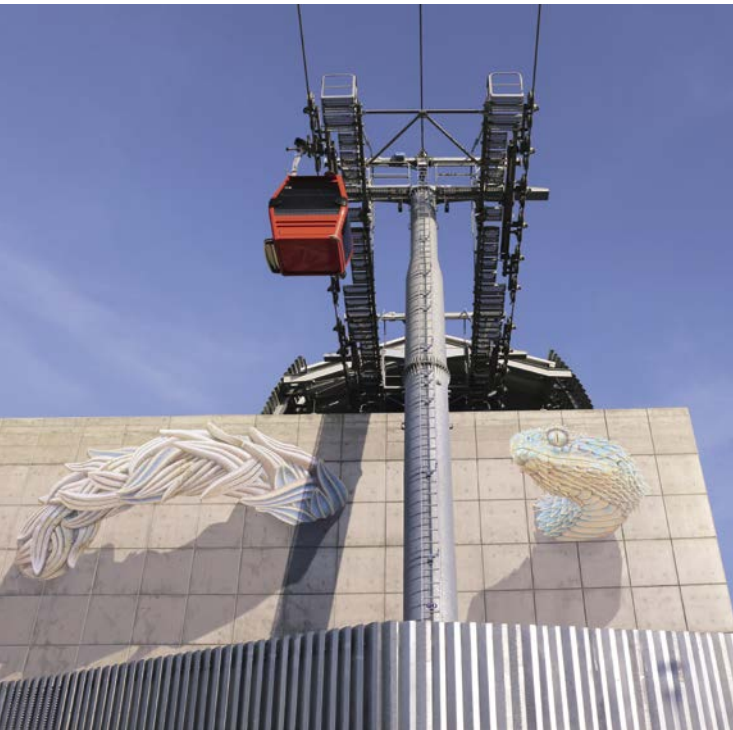
Covering a distance of nearly five kilometers, the system consists of two gondola lifts with a total of 7 stations and is helping to solve traffic problems in Mexico City's densely populated Ecatepec de Morelos district. Mexico's first urban ropeway is in operation for 17 hours a day, carrying 17,000 people. The ropeways are directly linked to the public transport system.

For the inhabitants and visitors of Ecatepec de Morelos, this connection means a considerably easier and improved quality of life. The stations, painted by regional and international artists, liven up the cityscape. Mexican president Peña attended the official opening on October 4, 2016.



Estación 4







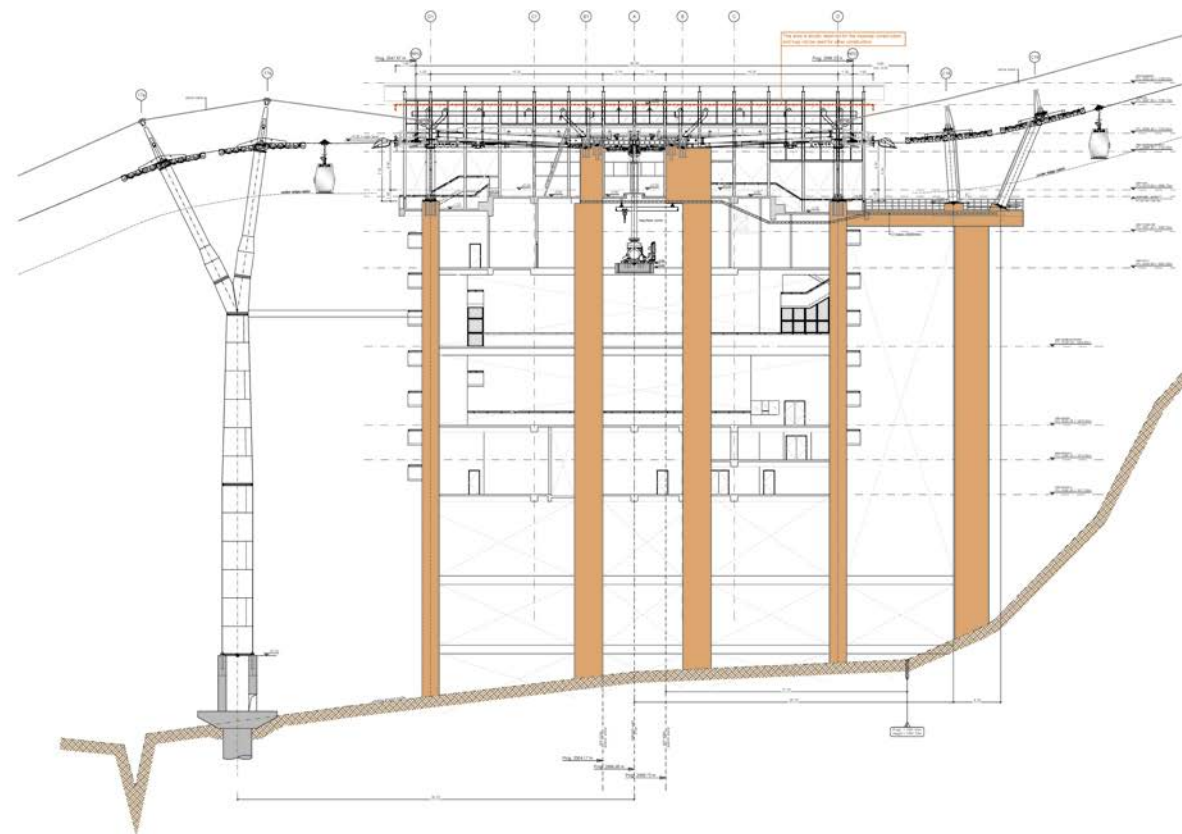
GD10 AWANA SKYWAY

Genting / MY

Inclined length	2642 m	Power	1298 kW
Vertical rise	630 m	Total number of vehicles	142
Transport capacity	3600 p/h	Total number of towers	22

The Genting Highlands Resort, 58 kilometers from Kuala Lumpur, is located at a height of 1,800 meters above sea level and welcomes roughly 20 million visitors annually. Visitors to the resort can now enjoy an innovative transport option. The new Awana Skyway gondola lift is highly technologically sophisticated in

many ways and reflects the resort's efforts to continuously optimize its customer services. During the ride, visitors can experience a breath-taking view of the highlands. Some of the cabins are equipped with full glass floors. The resort has been cooperating with LEITNER ropeways since 1975.







GD10 DORFBAHN I+II

Gerlos / AT

Dorfbahn Gerlos I

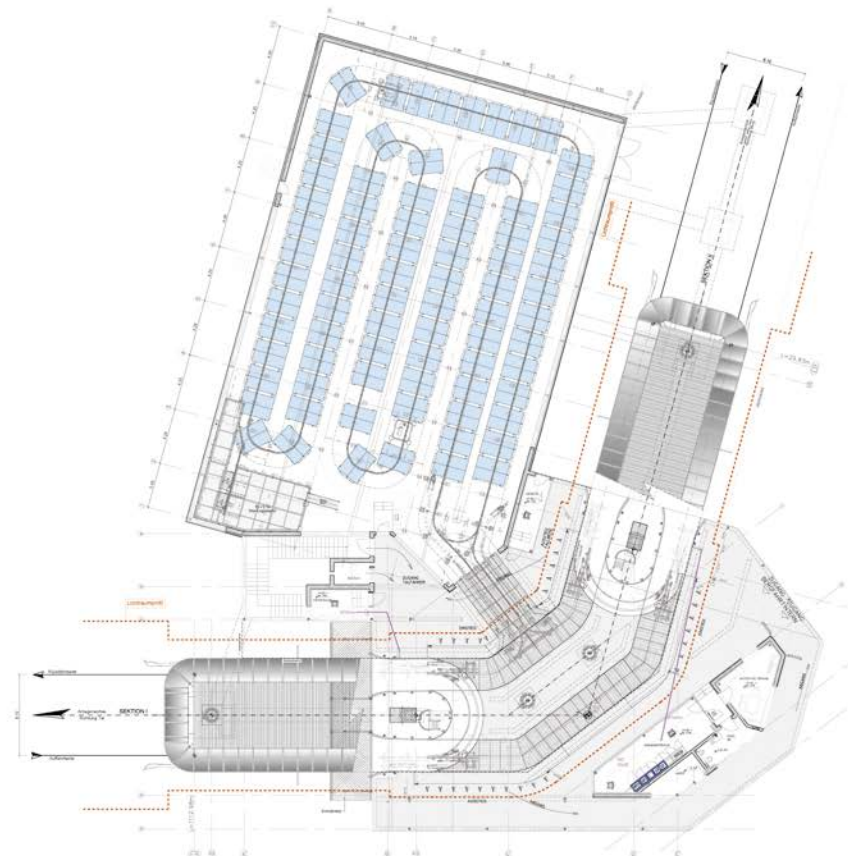
Inclined length	1134 m
Vertical rise	322 m
Transport capacity	2413 p/h
Power	418 kW
Total number of vehicles	38
Total number of towers	11

Dorfbahn Gerlos II

Inclined length	1466 m
Vertical rise	494 m
Transport capacity	2413 p/h
Power	510 kW
Total number of vehicles	41
Total number of towers	12

Since winter 2016/17, guests have been able to travel directly from the village of Gerlos in the Zillertal valley to the ski resort on the Isskogel mountain. Thanks to the new "Dorfbahn" 10-passenger gondola lift, guests no longer have to take the bus to the valley station for the Isskogel gondola lift around 1.5 km away.

The location of the new monocable gondola lift in the center of Gerlos not only means more convenient access to the skiing resort for winter sports enthusiasts, but also reduces ski bus and individual traffic both in the village and on the main road.







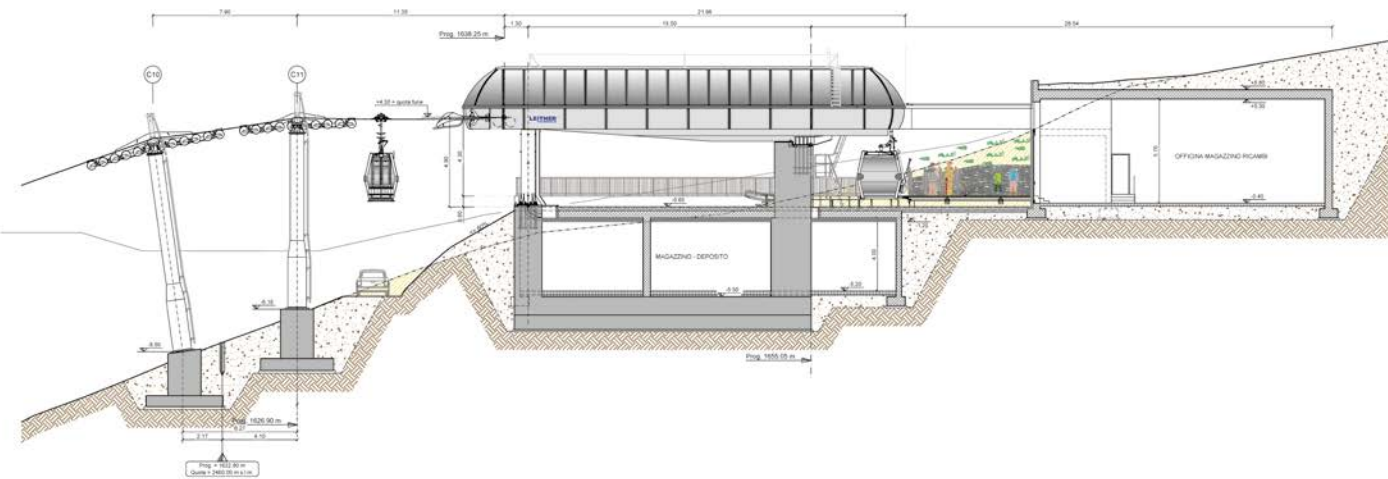
GD10 PFANNSPITZE

Plose - Brixen / IT

Inclined length	1715 m	Power	650 kW
Vertical rise	554 m	Total number of vehicles	35
Transport capacity	1800 p/h	Total number of towers	11

On the Plose, the local mountain of Brixen in South Tyrol, there is further proof that multifunctionality is becoming increasingly important for ropeways. The GD10 Pfannspitze was put into operation in the winter season 2016/17, replacing the two "Skihütte" and "Pfannspitze" chairlifts. In the spacious

10-passenger cabins, cyclists, families with baby buggies and passengers with wheel-chairs will find plenty of room and greater comfort when traveling in the summer. Summer and winter sports enthusiasts will also be able to transport their equipment more easily.







GD10 CASTELIR - LE FASSANE - LA MOREA

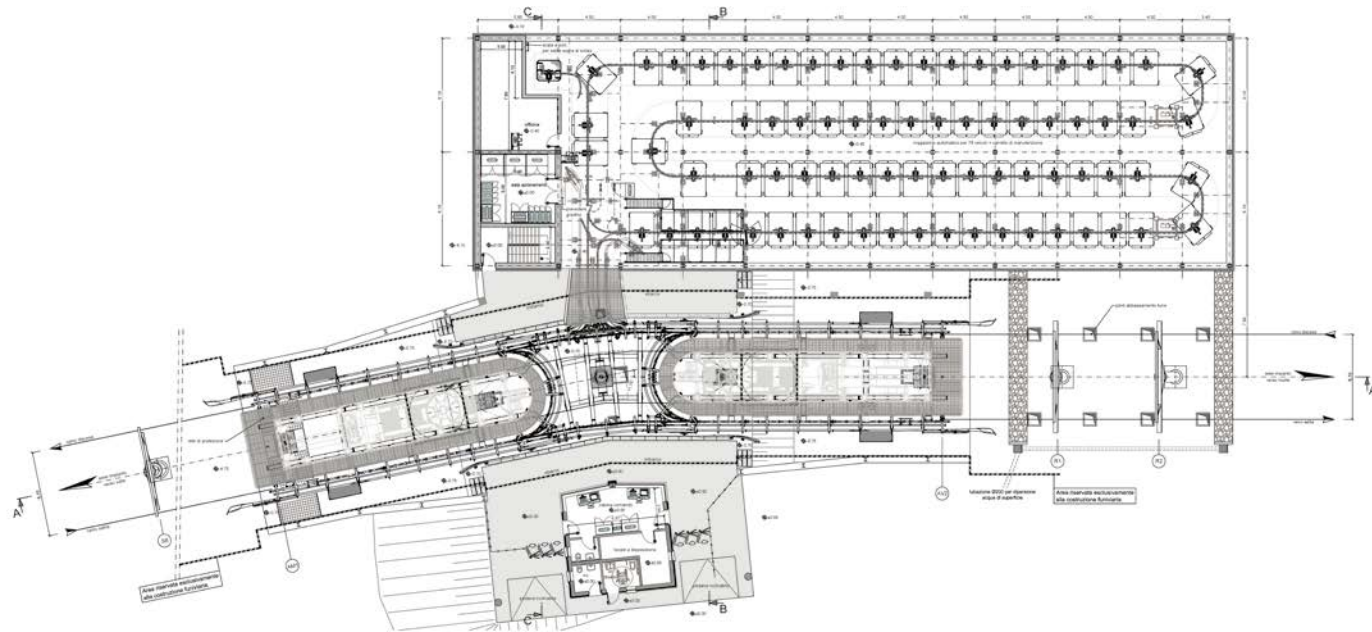
Predazzo / IT

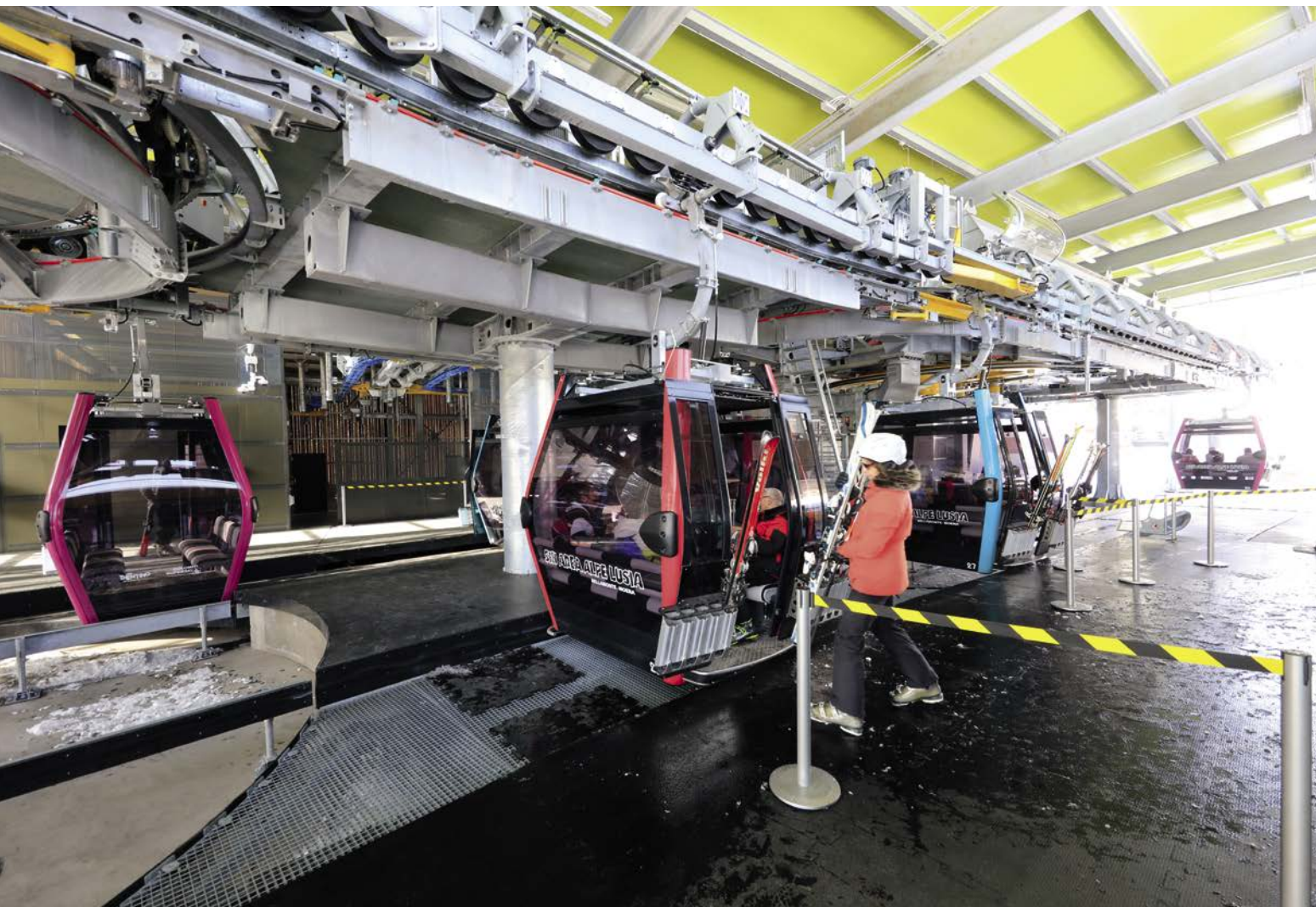
Castelir - Le Fassane

Inclined length	1437 m
Vertical rise	240 m
Transport capacity	2600 p/h
Power	390 kW
Total number of vehicles	46
Total number of towers	8

Le Fassane - La Morea

Inclined length	1059 m
Vertical rise	174 m
Transport capacity	2600 p/h
Power	350 kW
Total number of vehicles	34
Total number of towers	7







GD10 PIZZALTO - GRAVARE - TOPPE DEL TESORO

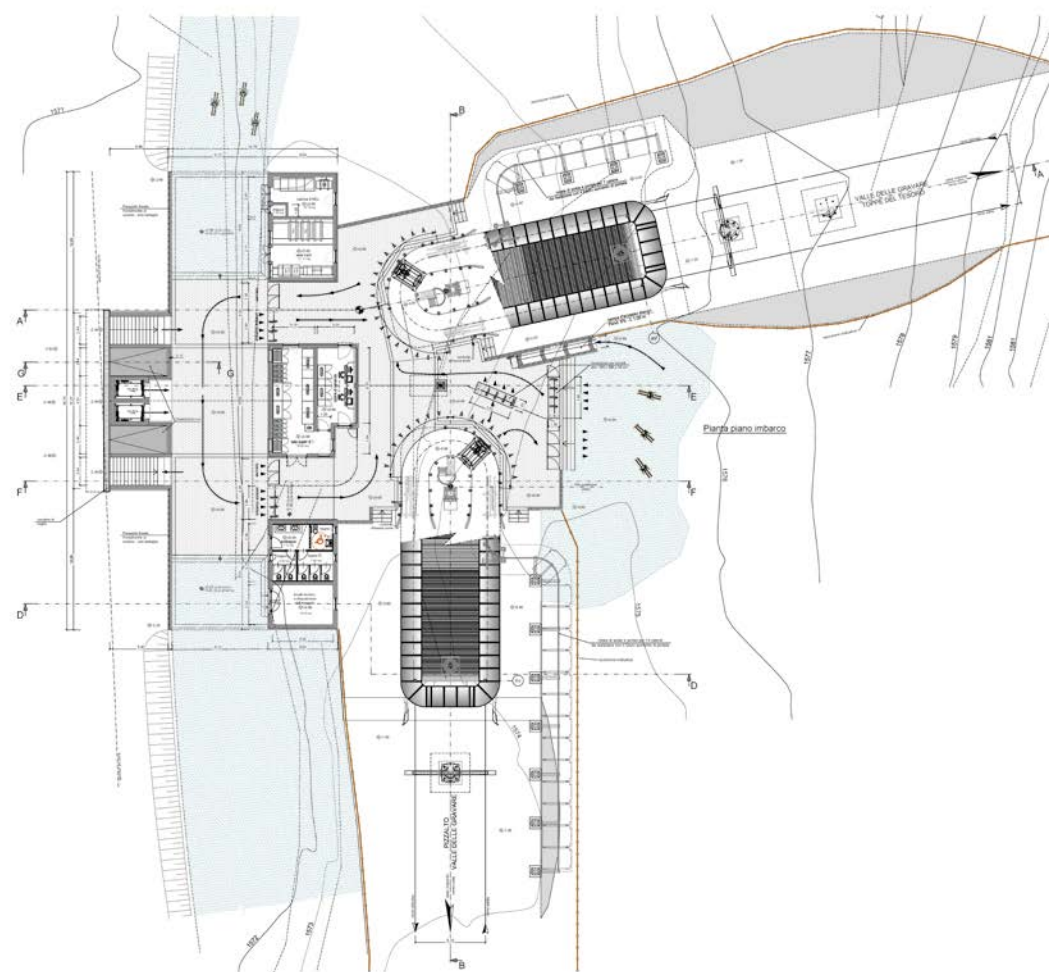
Roccaraso / IT

Pizzalto - Gravare

Inclined length	1547 m
Vertical rise	94 m
Transport capacity	2800 p/h
Power	470 kW
Total number of vehicles	58
Total number of towers	13

Gravare - Toppe del Tesoro

Inclined length	1567 m
Vertical rise	492 m
Transport capacity	2800 p/h
Power	660 kW
Total number of vehicles	50
Total number of towers	11

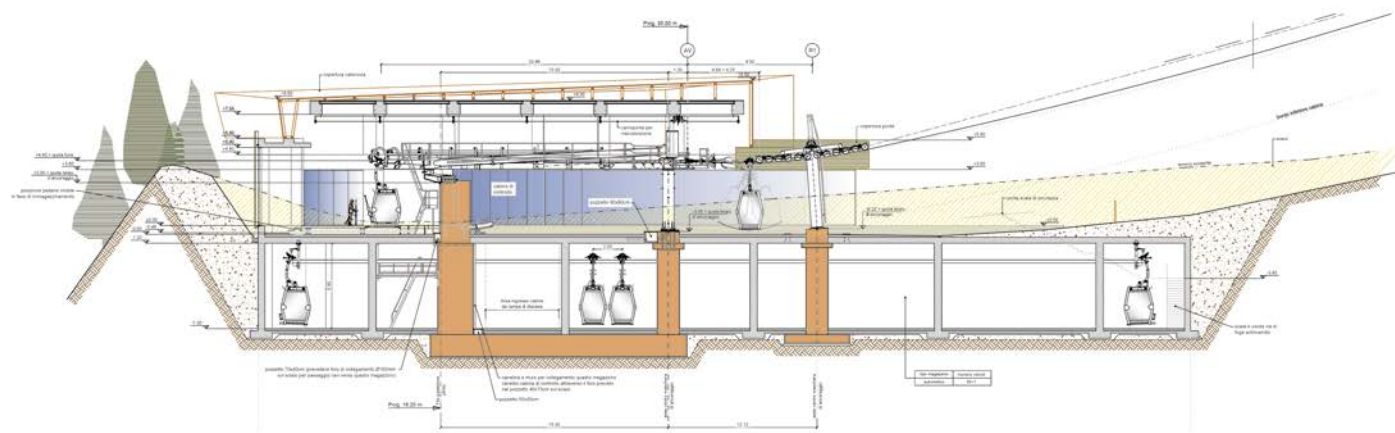




GD8 ARABBA - PORTADOS

Livinallongo / IT

Inclined length	1439 m	Power	690 kW
Vertical rise	492 m	Total number of vehicles	50
Transport capacity	3000 p/h	Total number of towers	10







GD8 CABARCENO I+II

Cabarceno / ES

Cabarceno I

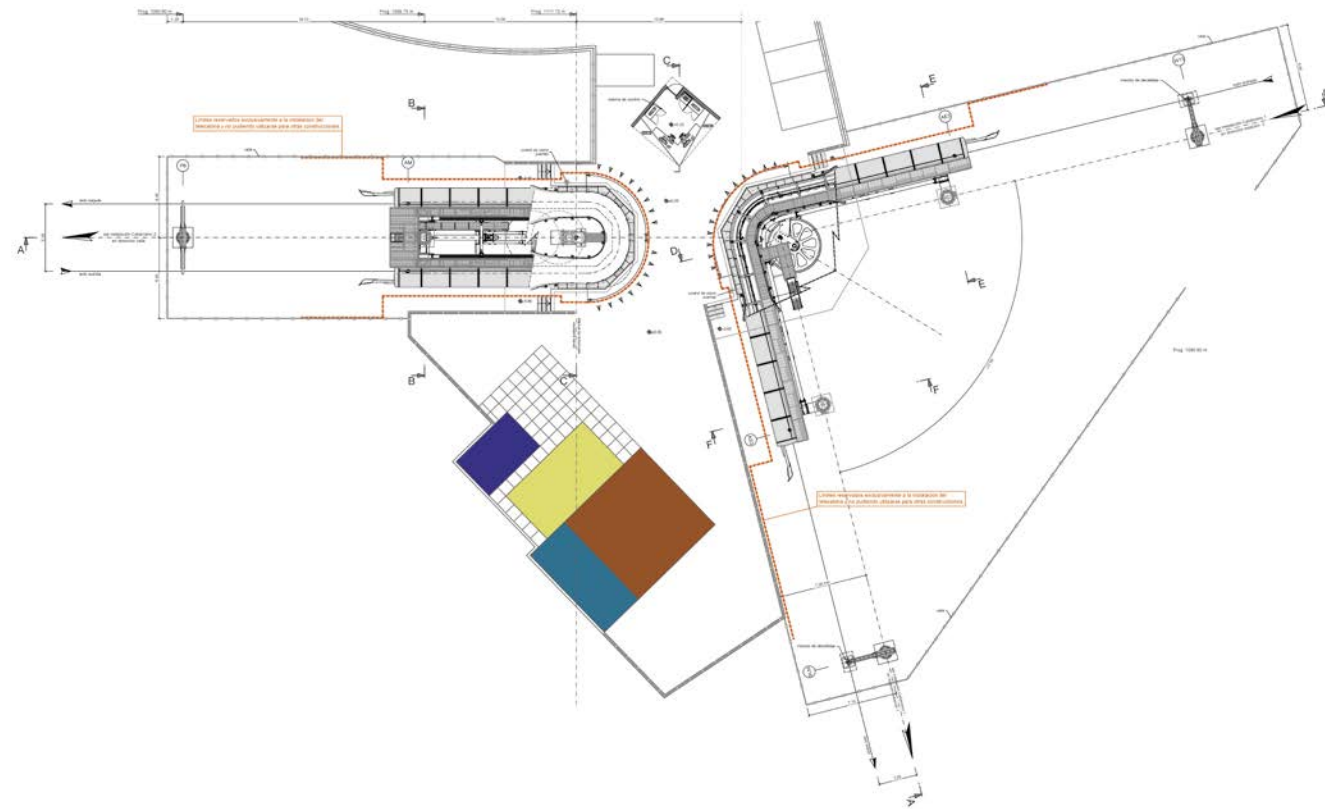
Inclined length	3831 m
Vertical rise	288 m
Transport capacity	1250 p/h
Power	335 kW
Total number of vehicles	38
Total number of towers	22

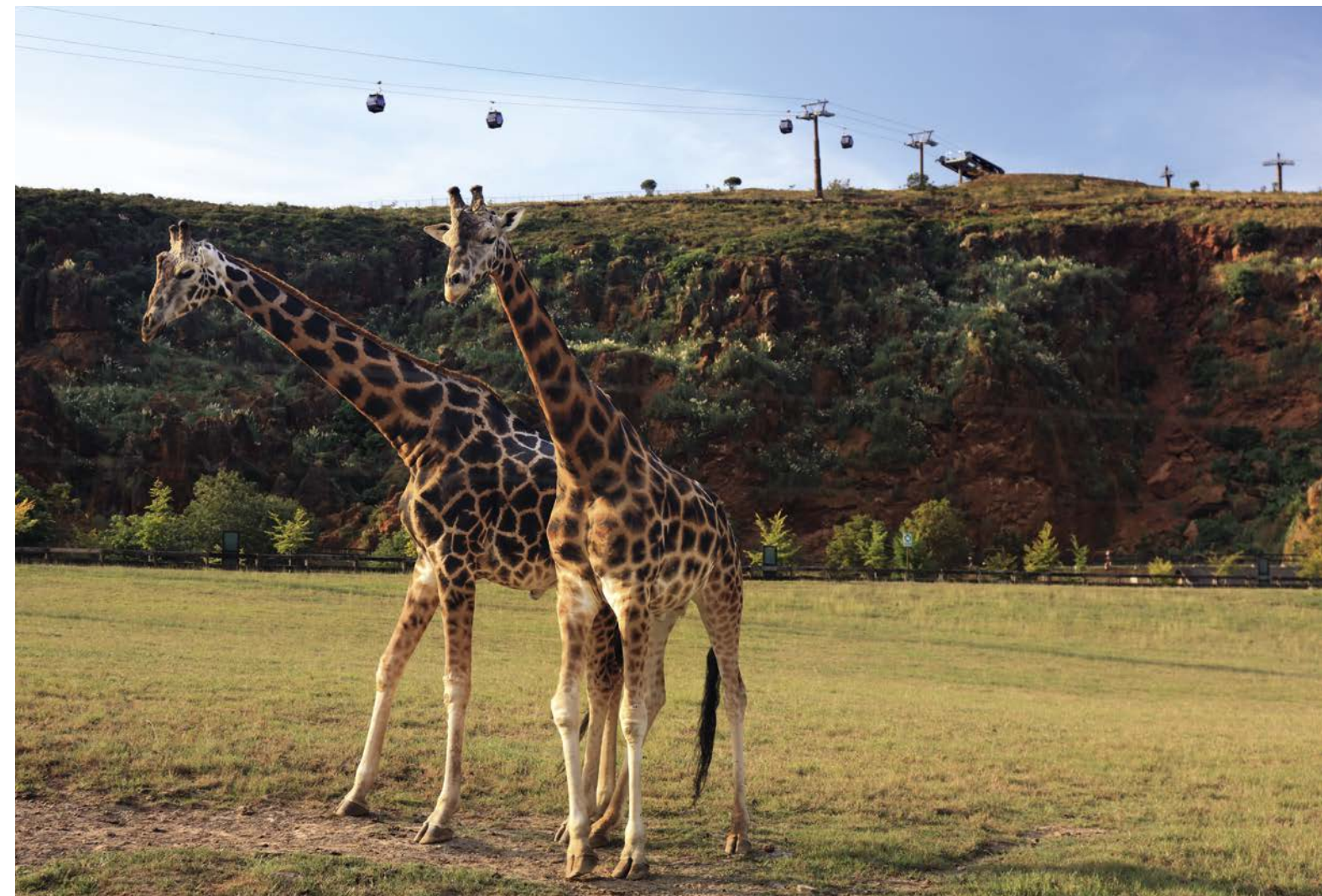
Cabarceno II

Inclined length	1069 m
Vertical rise	101 m
Transport capacity	1250 p/h
Power	168 kW
Total number of vehicles	22
Total number of towers	6

Since September 2016, visitors to the nature reserve of Cabárceno in the Northern Spanish province of Cantabria can enjoy a view of the immense zoo from above. Instead of sitting in the car, or traversing the park on foot or by bicycle, visitors can view animals directly through spacious panoramic windows. Cabins with glass floors are a special attraction. The ropeway consists of two independent gondola

lifts. One forms a triangle with three angle stations. One of this ropeway's special features is that each of the 22 support towers only has one roller battery on one side. That means that the 38 gondolas only run counter-clockwise on one side of the support towers. The ropes were partially pulled with a drone to avoid disturbing the animals.







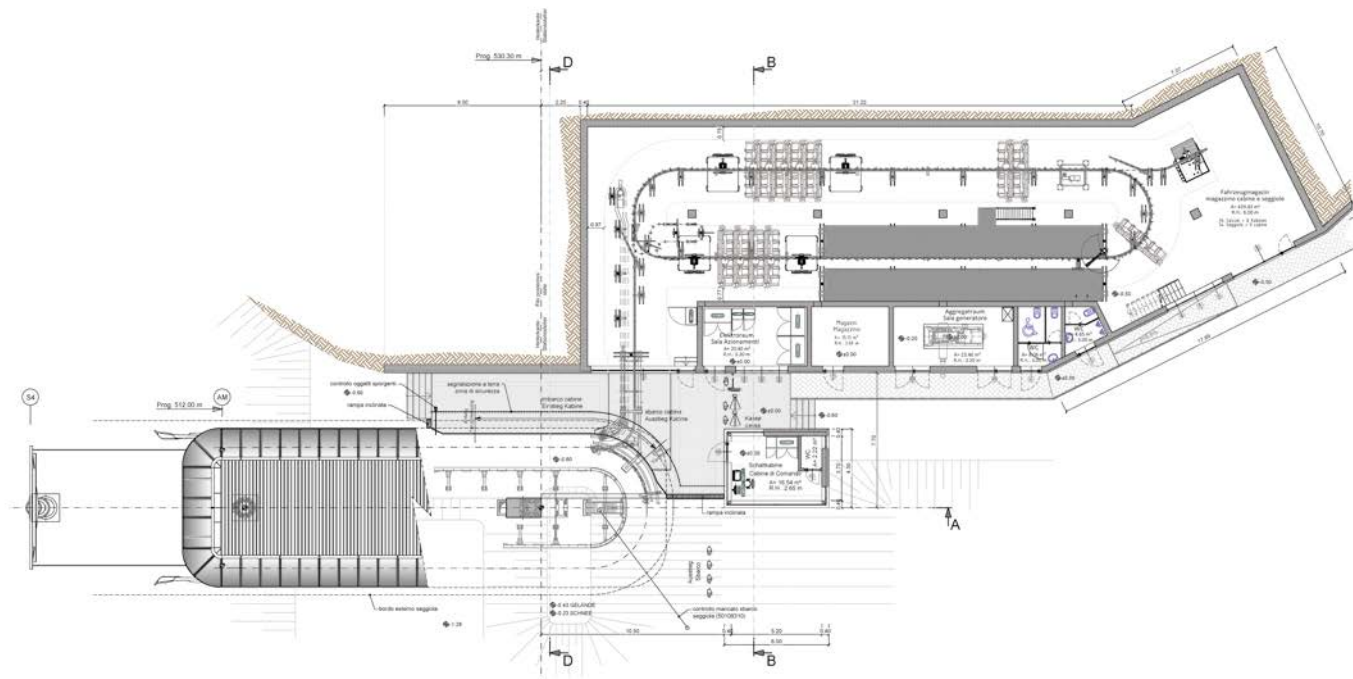
TMX6-8 LANER

Obereggen / IT

Inclined length	465 m	Power	440 kW
Vertical rise	98 m	Total number of vehicles	42
Transport capacity	3000 p/h	Total number of towers	4

The new Laner Telemix system has great symbolic value for the Obereggen ski resort and for LEITNER ropeways. LEITNER ropeways has returned to the popular ski resort east of Bolzano after around 30 years. A modern Telemix system replaced the previous fixed 4-seater Laner chairlift in time for the start of the winter season. Equipped with 6-passenger seats and 8-seater cabins, it doesn't just

improve transport services. It also offers far greater functionality. Parallel to the new facility, a 750-meter-long toboggan run was installed, meaning tobogganists are able to reach their destination easily with the flexible and spacious ropeway. As another bonus, the new installations provide a far more convenient and efficient link to the Pampeago ski resort.







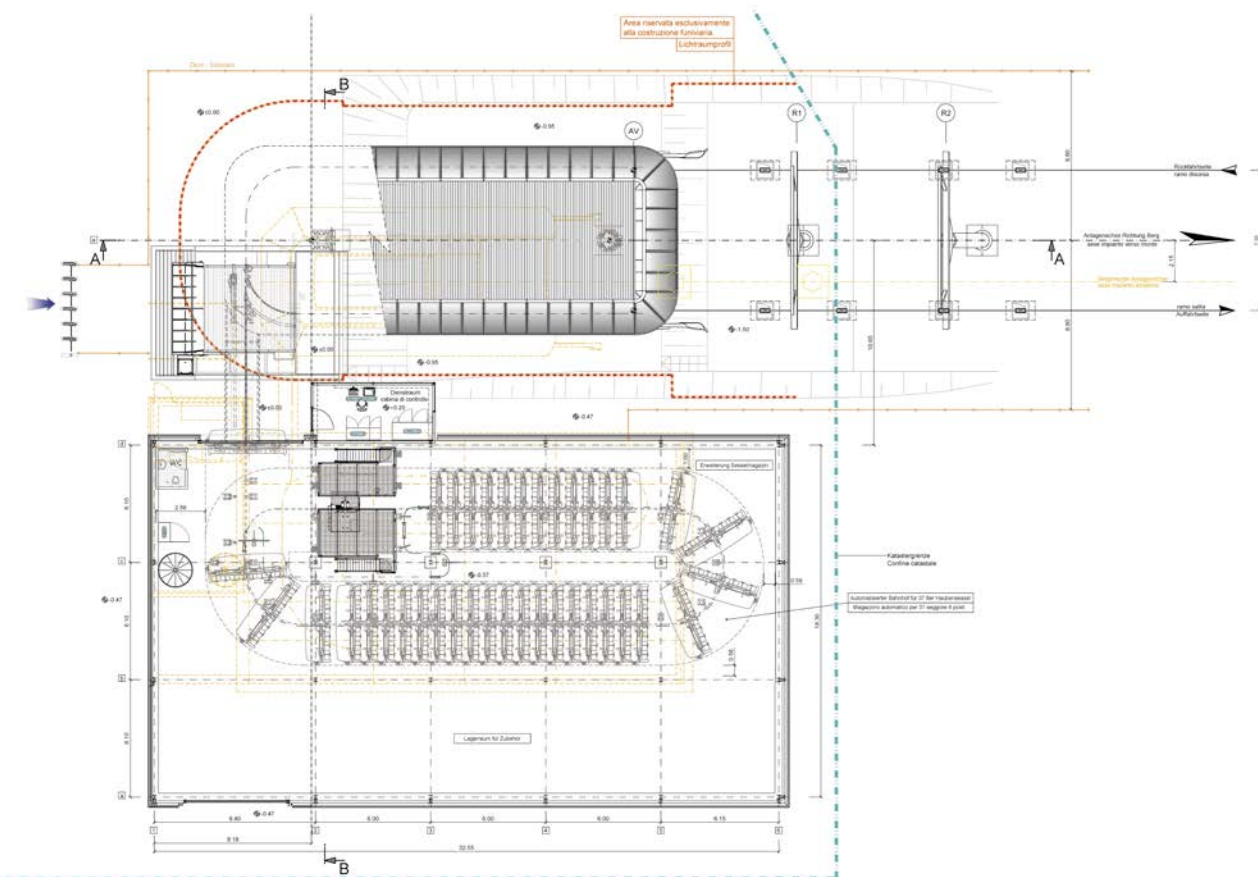
CD8C ENZIAN

Ratschings / IT

Inclined length	816 m	Power	612 kW
Vertical rise	242 m	Total number of vehicles	37
Transport capacity	2800 p/h	Total number of towers	9

The first 8-seater chairlift in Italy was built this winter in Racines. This installation also marked the première for the LEITNER Premium Chair in Italy: The high-end design and unparalleled comfort of this chair take chairlift seating to luxurious new heights. Design elements and expert knowledge from the world of automotive engineering were woven into the develop-

ment of the Premium Chair. The seats feature an ergonomic design and slip-proof real leather upholstery, while bubbles enable winter sports enthusiasts in Racines to enjoy the ride even in less clement weather. Kitted out in the colors of the ski resort, the chairs also provide extra eye-catching appeal.







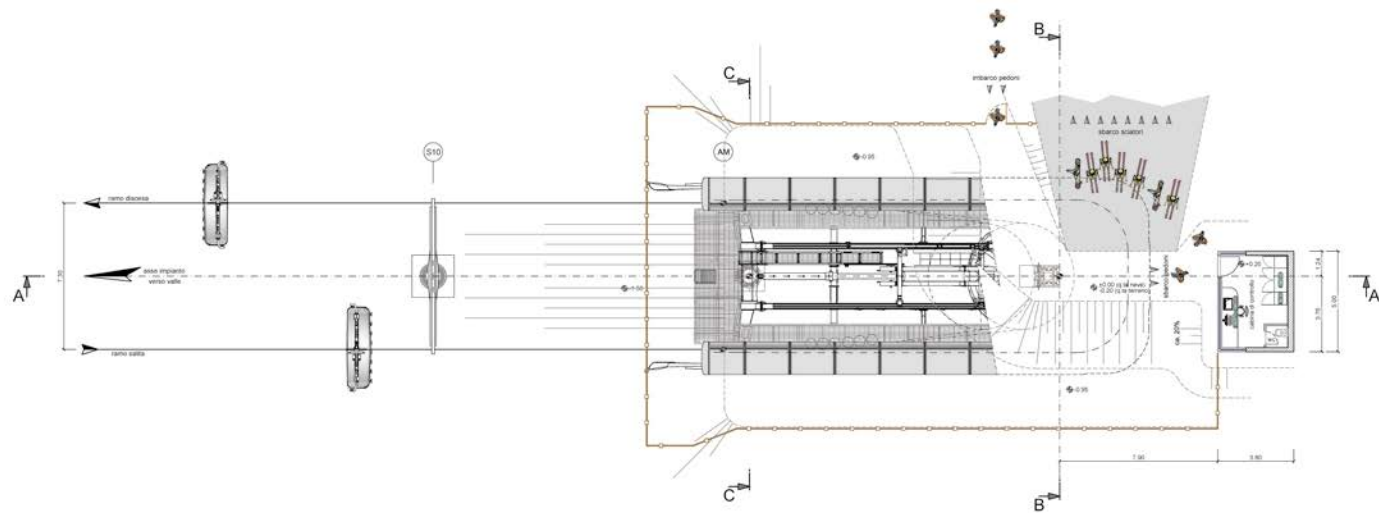
CD8C GRAN PARADISO

Plan De Gralba / IT

Inclined length	1007 m	Power	400 kW
Vertical rise	231 m	Total number of vehicles	45
Transport capacity	2800 p/h	Total number of towers	10

Having installed a 6-seater chairlift in the 2015/16 season, Piz Sella AG invested in infrastructure again for this winter. The new Gran Paradiso chairlift is the first 8-seater chairlift with seat heating in Italy. Piz Sella AG has been working with LEITNER ropeways since the ski resort first opened. They chose the modern LEITNER Premium Chair for this project.

Inspired by automotive design and featuring genuine leather seats, it will be a real highlight of the ski resort. The seats are also equipped with individual footrests and blue bubbles. The blue color reflects Piz Sella AG's corporate color and is a direct reference to the Comici mountain hut, whose design is dominated by the color blue.







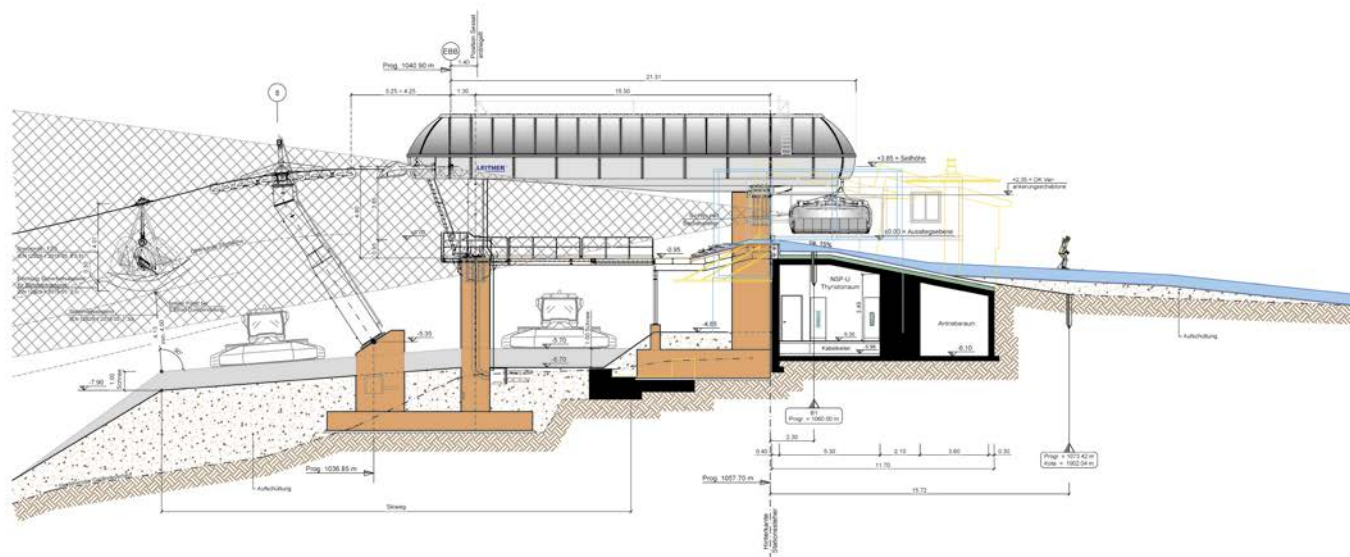
CD8C BURGSTALL-ALMBAHN

Schladming / AT

Inclined length	1007 m	Power	468 kW
Vertical rise	336 m	Total number of vehicles	37
Transport capacity	2800 p/h	Total number of towers	9

The Burgstallalmbahn chairlift also uses the LEITNER DirectDrive, which had already proven highly successful in the Gipfelbahn Hochwurzen gondola lift, built by LEITNER ropeways in 2013. The DirectDrive is developed and produced one hundred percent by LEITNER. Director Georg Bliem, CEO of Planai-Hochwurzen-Bahnen GmbH, also appreciates the advantages of in-house production:

"We first used the DirectDrive by LEITNER for the Gipfelbahn Hochwurzen gondola lift in Rohrmoos. We are committed to combining sustainability and innovation. Our experience with the LEITNER system has taught us that environmentally friendly does not always mean less performance – on the contrary!"



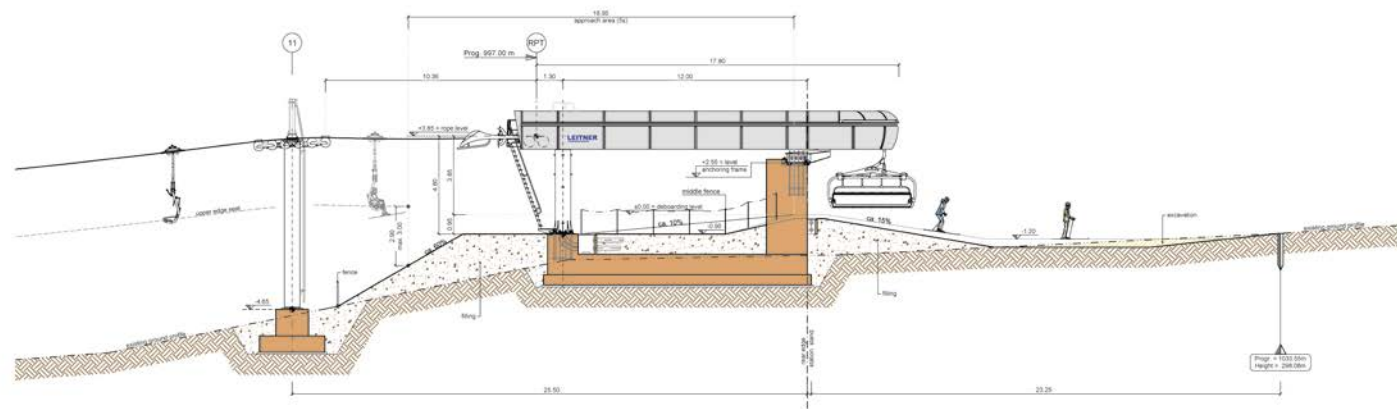




CD8 KUNGSLIFTEN

Kungsberget / SE

Inclined length	970 m	Power	400 kW
Vertical rise	184 m	Total number of vehicles	61
Transport capacity	4000 p/h	Total number of towers	11







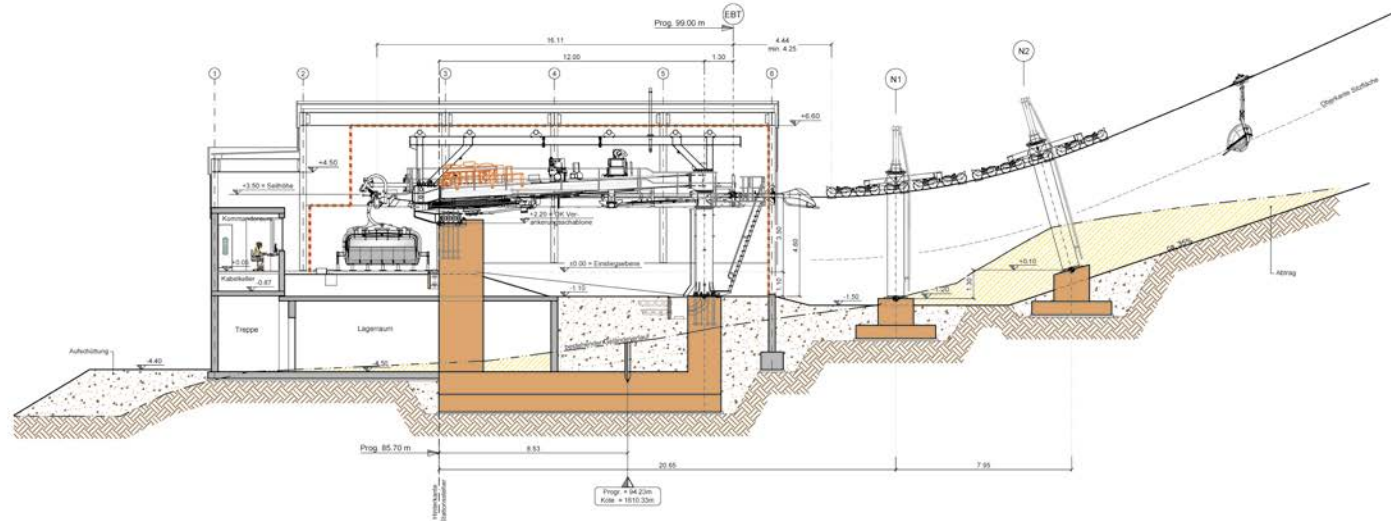
CD6C BIERENWANG

Oberstdorf / DE

Inclined length	759 m	Power	300 kW
Vertical rise	231 m	Total number of vehicles	39
Transport capacity	2400 p/h	Total number of towers	8

The new CD6C high-speed chairlift in Oberstdorf was the first system in Germany to be fitted with the Premium Chair. "The new, cutting-edge system fits our ski resort perfectly. Since energy efficiency is also highly important to our company, we have chosen the environmentally friendly and energy-saving DirectDrive system," says Augustin Kröll, CEO of Fellhorn-

bahn GmbH. The new ropeway is replacing the old and very steep surface lift called the IV Fellhornlift, enabling greater capacity of up to 2,400 passengers per hour and reducing waiting times for visitors. Thanks to the gearless LEITNER DirectDrive system, the ropeway is also particularly efficient and environmentally friendly.



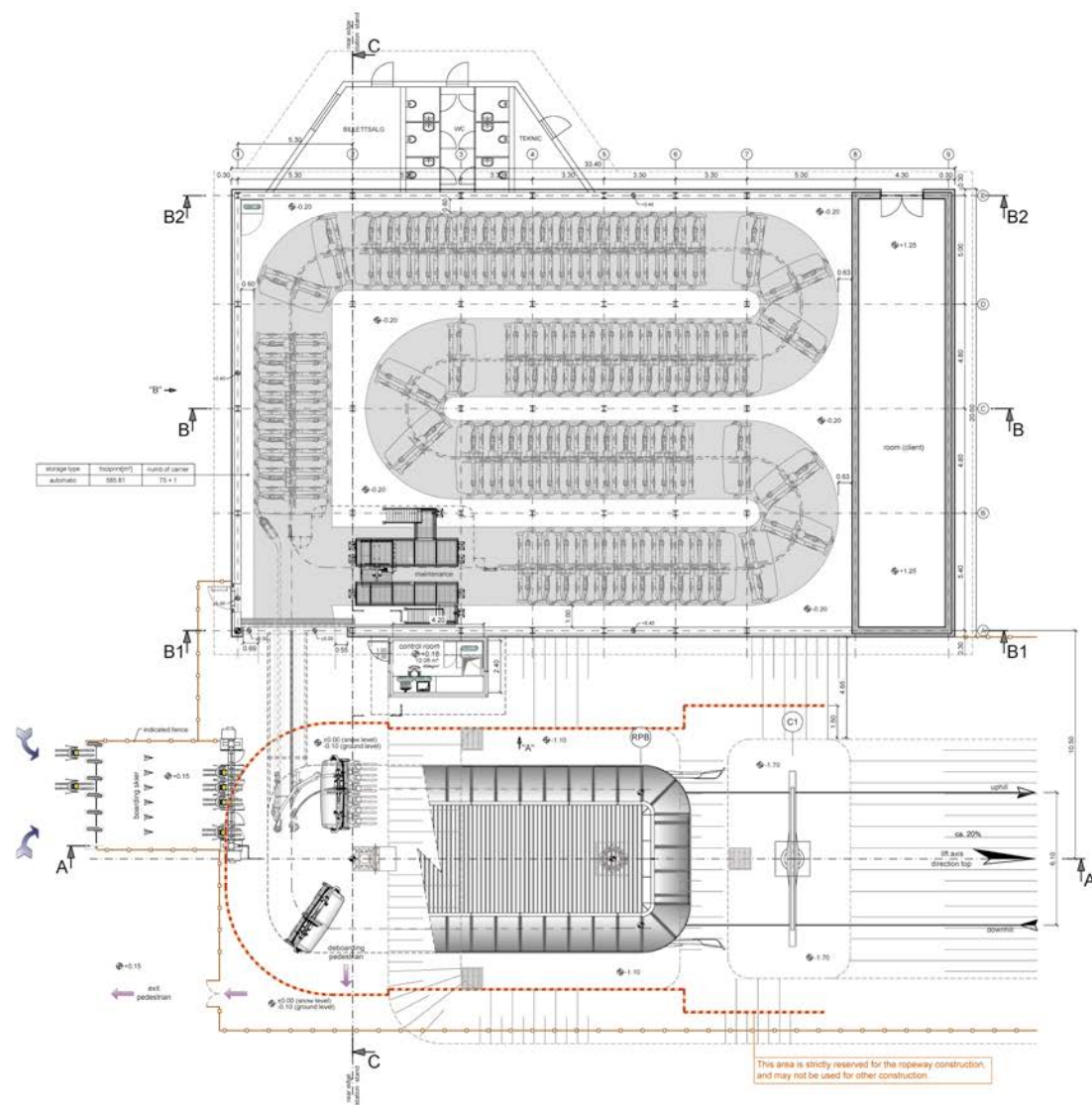




CD6C SKIHYTTA EKSPRESS

Trysil / NO

Inclined length	1356 m	Power	400 kW
Vertical rise	289 m	Total number of vehicles	75
Transport capacity	2800 p/h	Total number of towers	12







CD6C HAMRAFJÄLLET

Tännaldalen / SE

Inclined length	725 m	Power	310 kW
Vertical rise	176 m	Total number of vehicles	40
Transport capacity	2600 p/h	Total number of towers	9

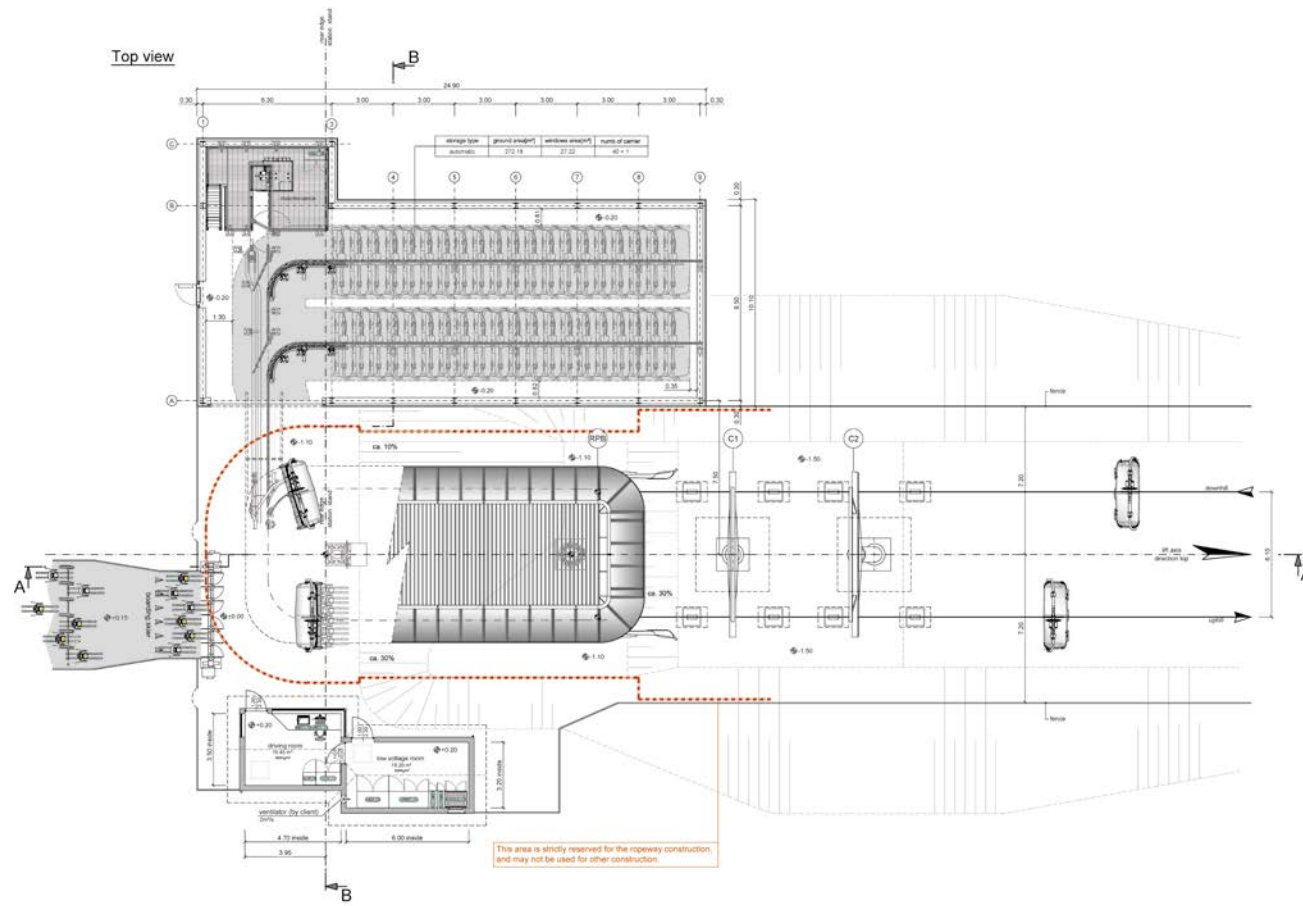


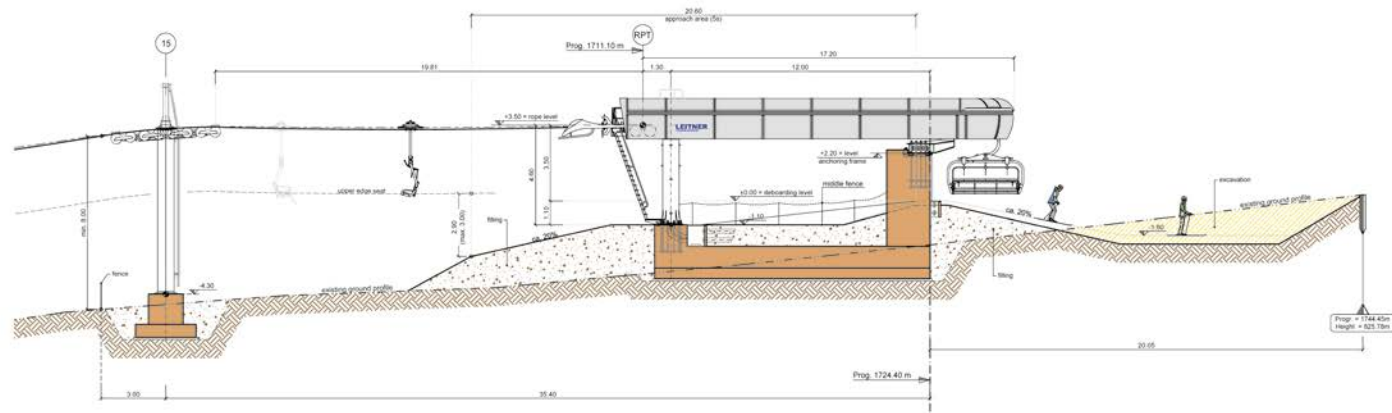
Photo: William Johansson



CD6 STÖTEN

Sälen / SE

Inclined length	1725 m	Power	440 kW
Vertical rise	304 m	Total number of vehicles	79
Transport capacity	2800 p/h	Total number of towers	15

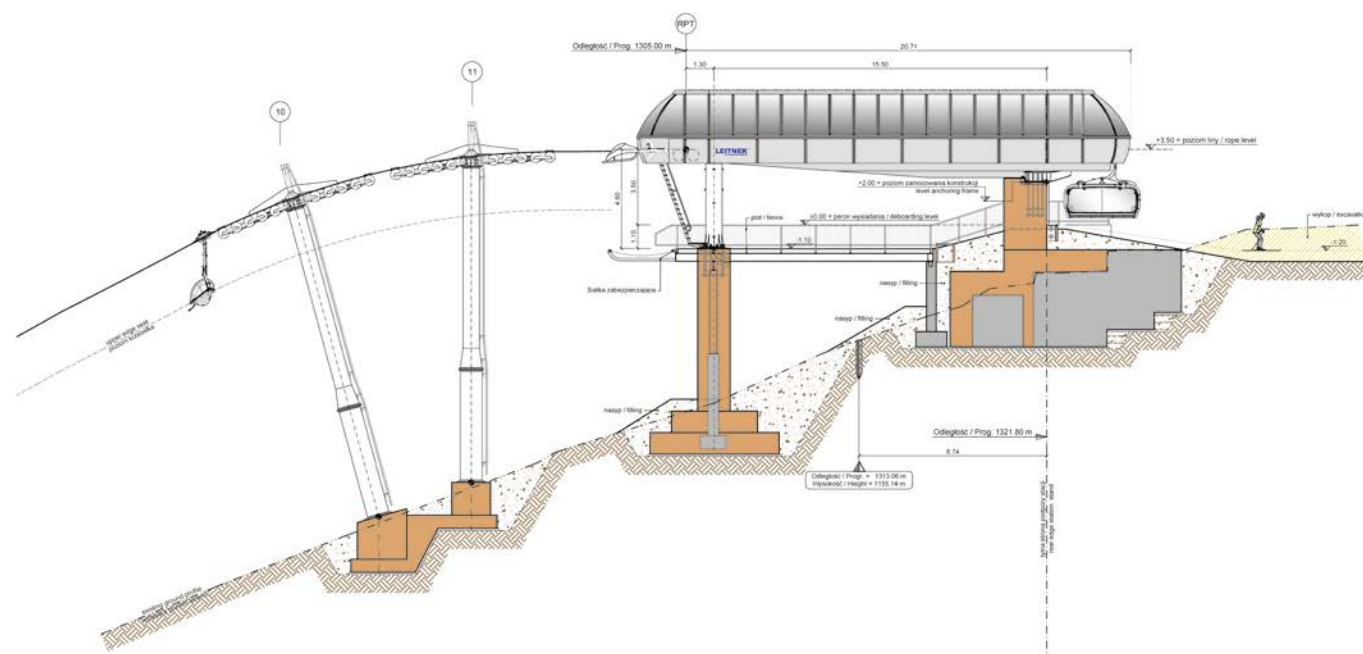




CD6C CZARNA GORA EXPRESS

Sienna / PL

Inclined length	1279 m	Power	680 kW
Vertical rise	369 m	Total number of vehicles	66
Transport capacity	3000 p/h	Total number of towers	11

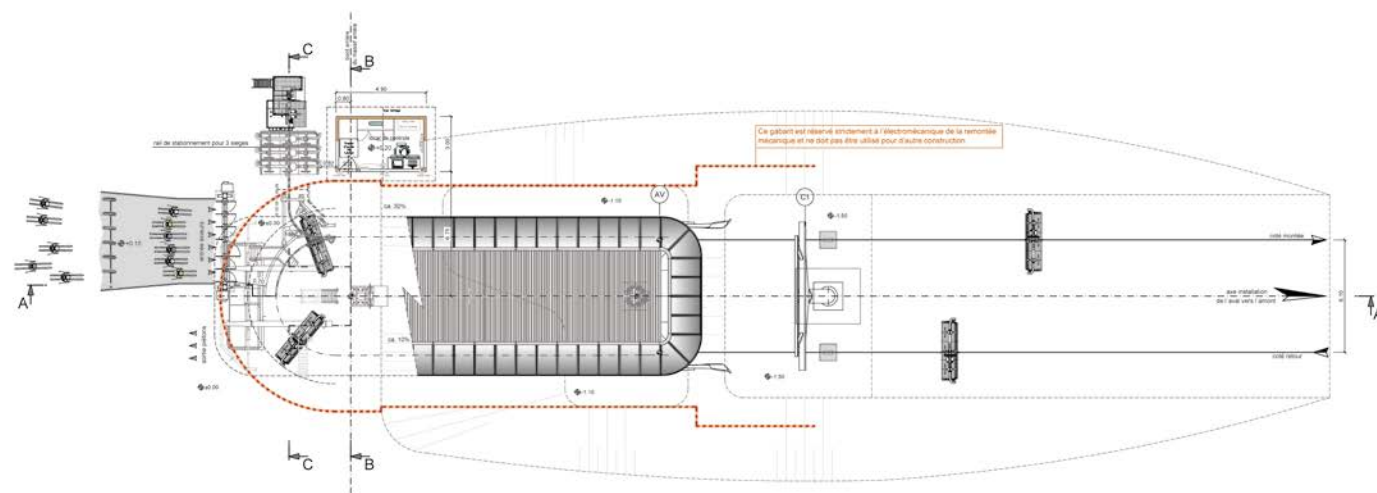




CD6 CHARVIN EXPRESS

Saint Jean d'Arves / FR

Inclined length	1633 m	Power	566 kW
Vertical rise	363 m	Total number of vehicles	89
Transport capacity	3000 p/h	Total number of towers	14

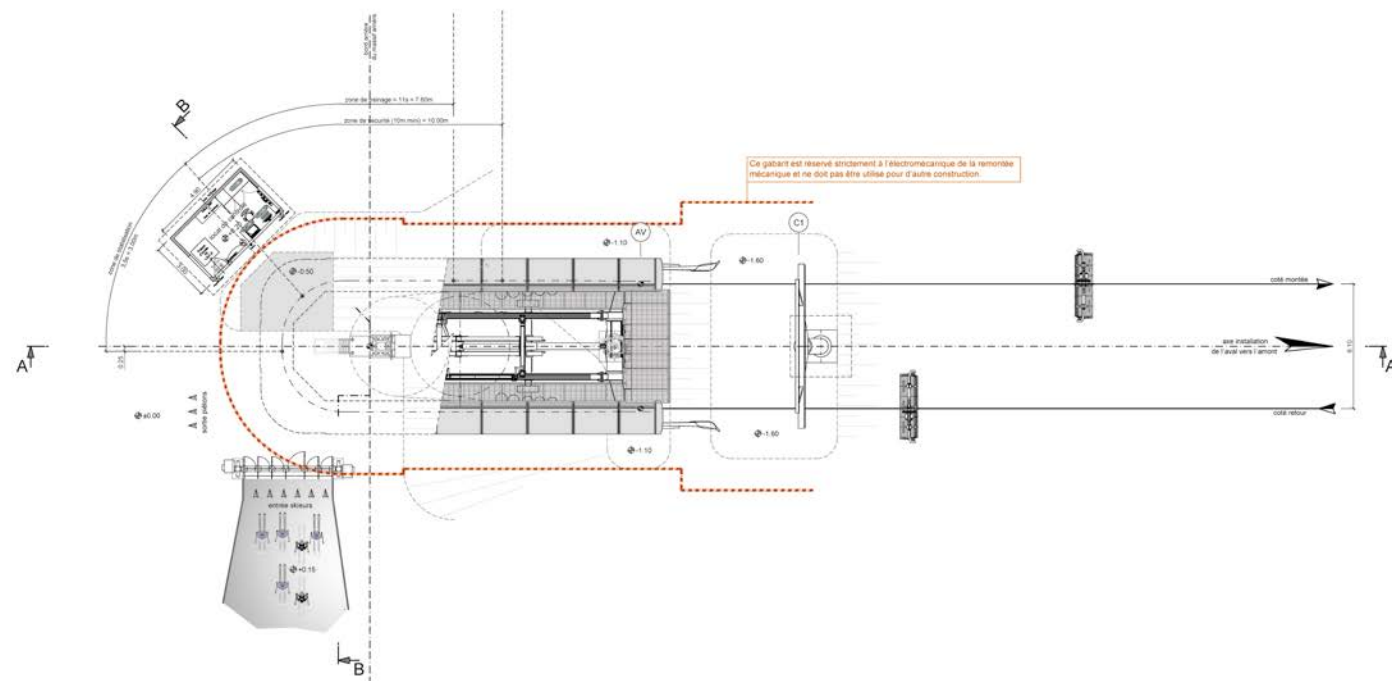


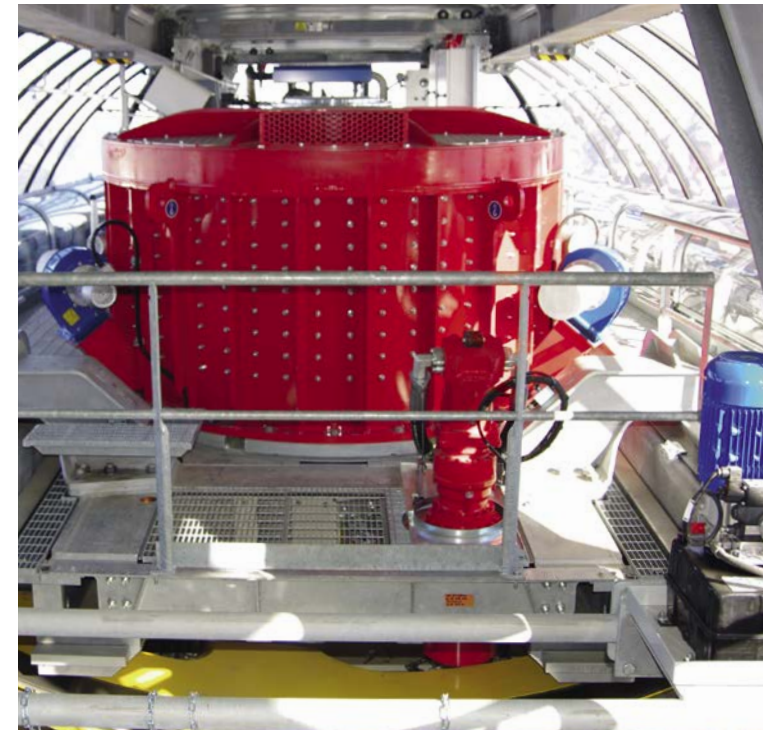


CD6 VOIE LACTÉE

Le Corbier / FR

Inclined length	1303 m	Power	481 kW
Vertical rise	347 m	Total number of vehicles	72
Transport capacity	3000 p/h	Total number of towers	9



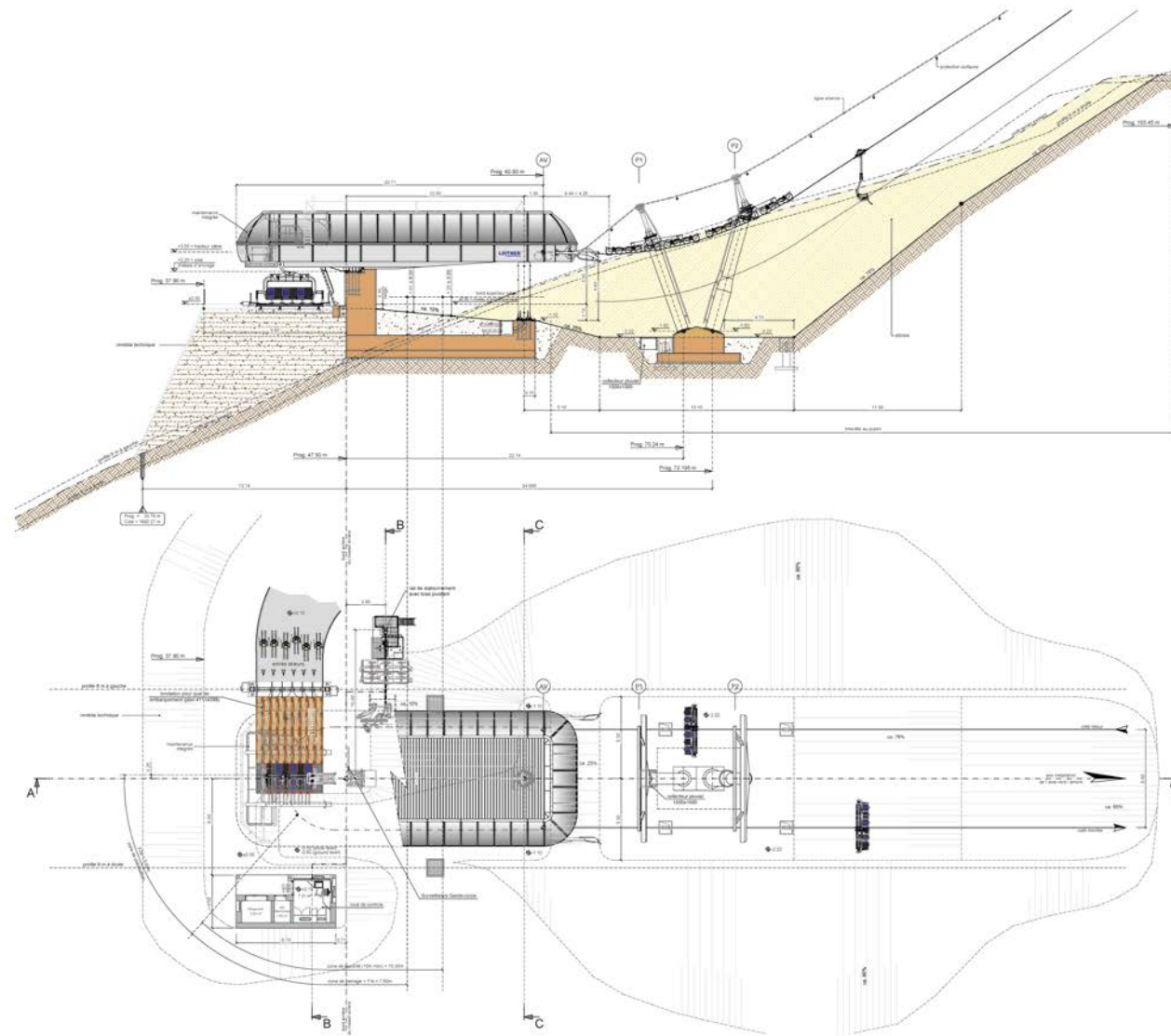


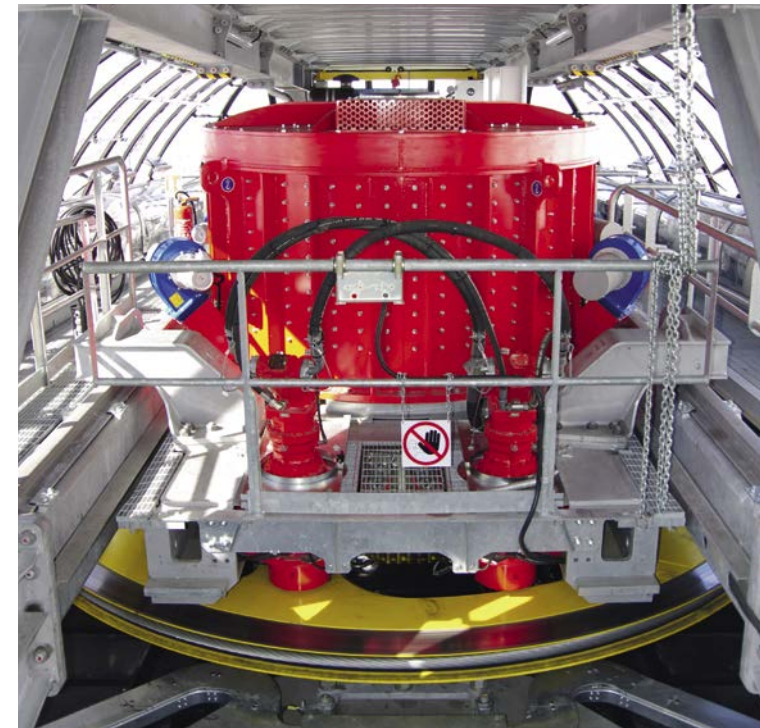


CD6 DES ARCELLINS

Val Cenis / FR

Inclined length	1940 m	Power	665 kW
Vertical rise	649 m	Total number of vehicles	85
Transport capacity	2457 p/h	Total number of towers	17



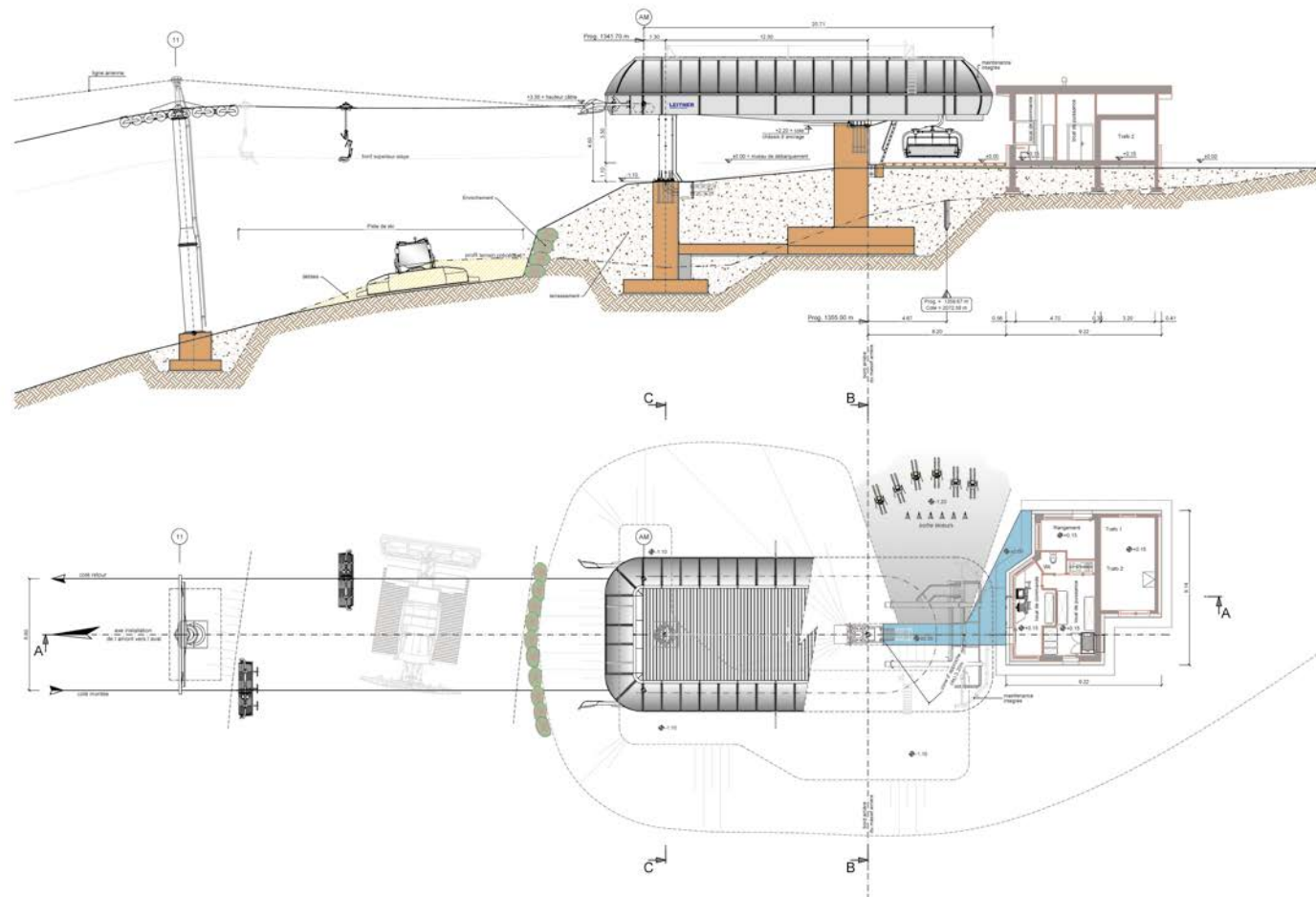




CD6 LA PARSA

Chamonix / FR

Inclined length	1157 m	Power	490 kW
Vertical rise	293 m	Total number of vehicles	64
Transport capacity	2964 p/h	Total number of towers	11







SL2 HAMRAFJÄLLET

Tännaldalen / SE

Inclined length	805 m	Power	90 kW
Vertical rise	165 m	Total number of vehicles	84
Transport capacity	1200 p/h	Total number of towers	10

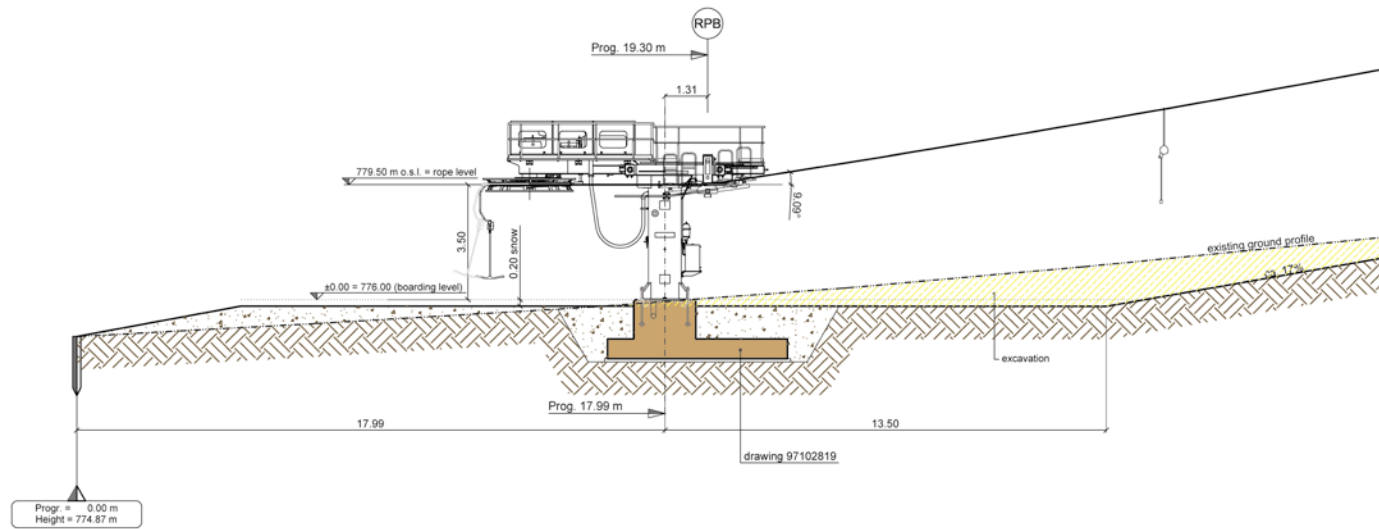


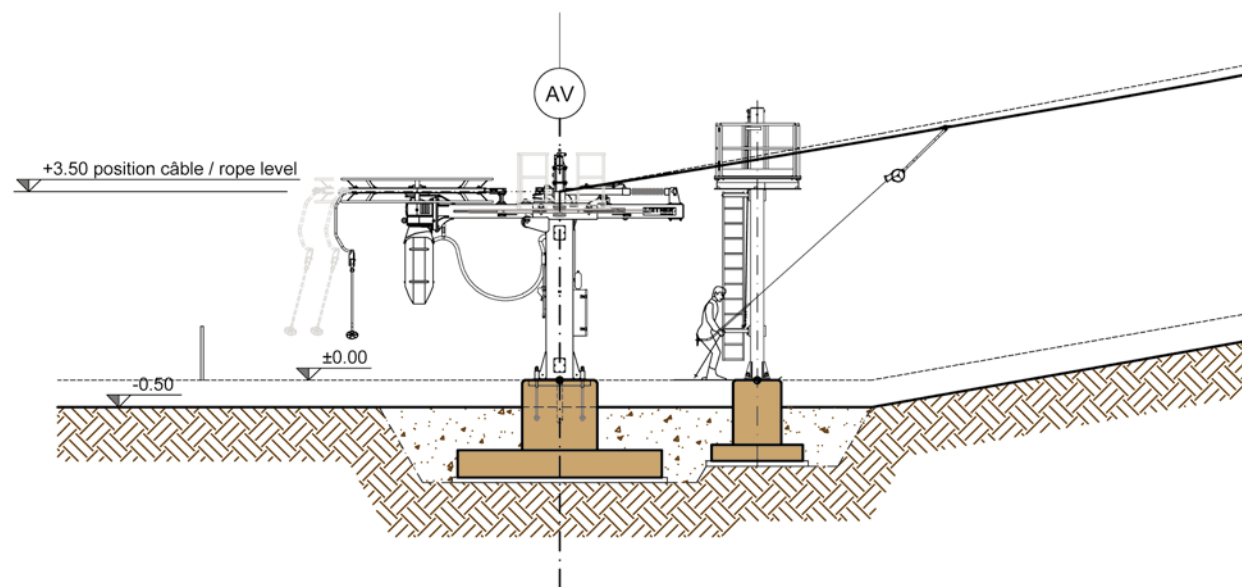
Photo: William Jonasson



SL1 LA JOUE

La Joue du Loup / FR

Inclined length	1.072 m	Power	110 kW
Vertical rise	235 m	Total number of vehicles	182
Transport capacity	900 p/h	Total number of towers	10

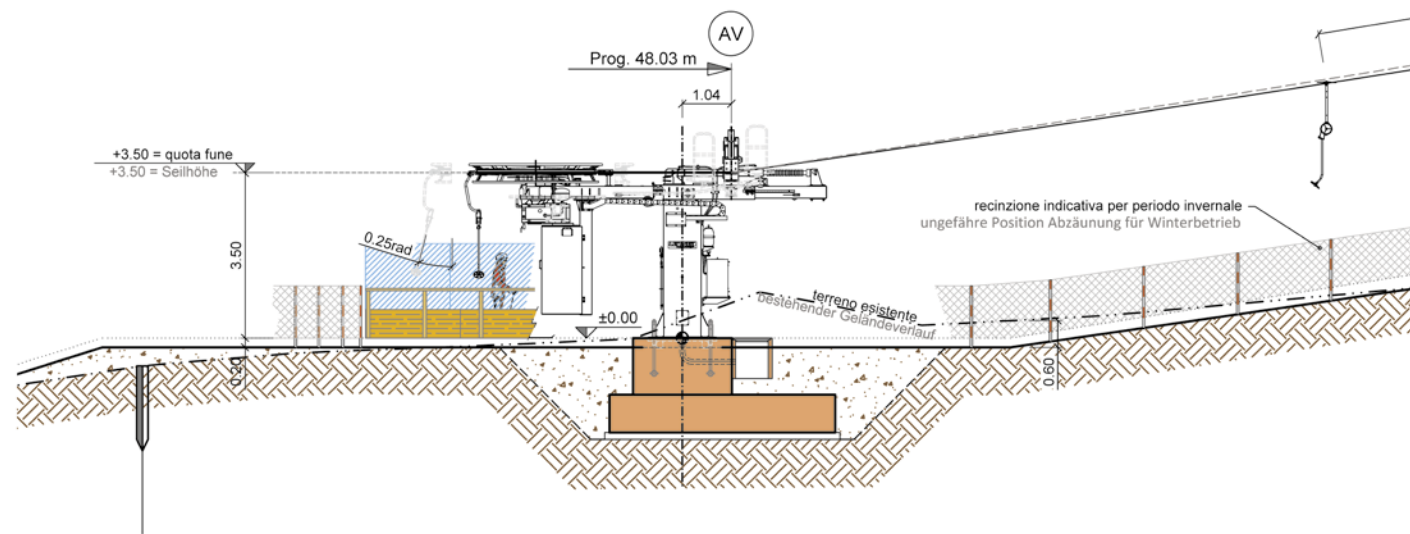




SL1 GASSE

Ridnaun / IT

Inclined length	563 m	Power	52 kW
Vertical rise	108 m	Total number of vehicles	90
Transport capacity	900 p/h	Total number of towers	6

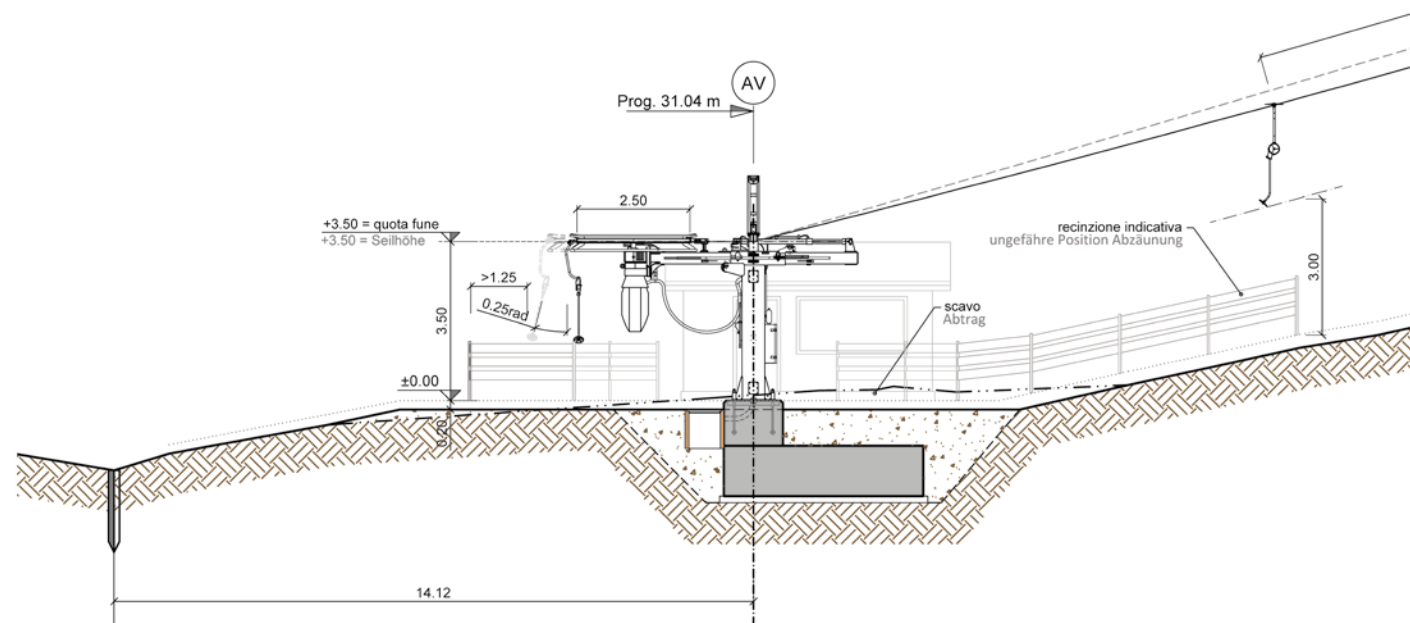




SL1 BERGERLIFT

Rein in Taufers / IT

Inclined length	307 m	Power	26 kW
Vertical rise	88 m	Total number of vehicles	40
Transport capacity	720 p/h	Total number of towers	3

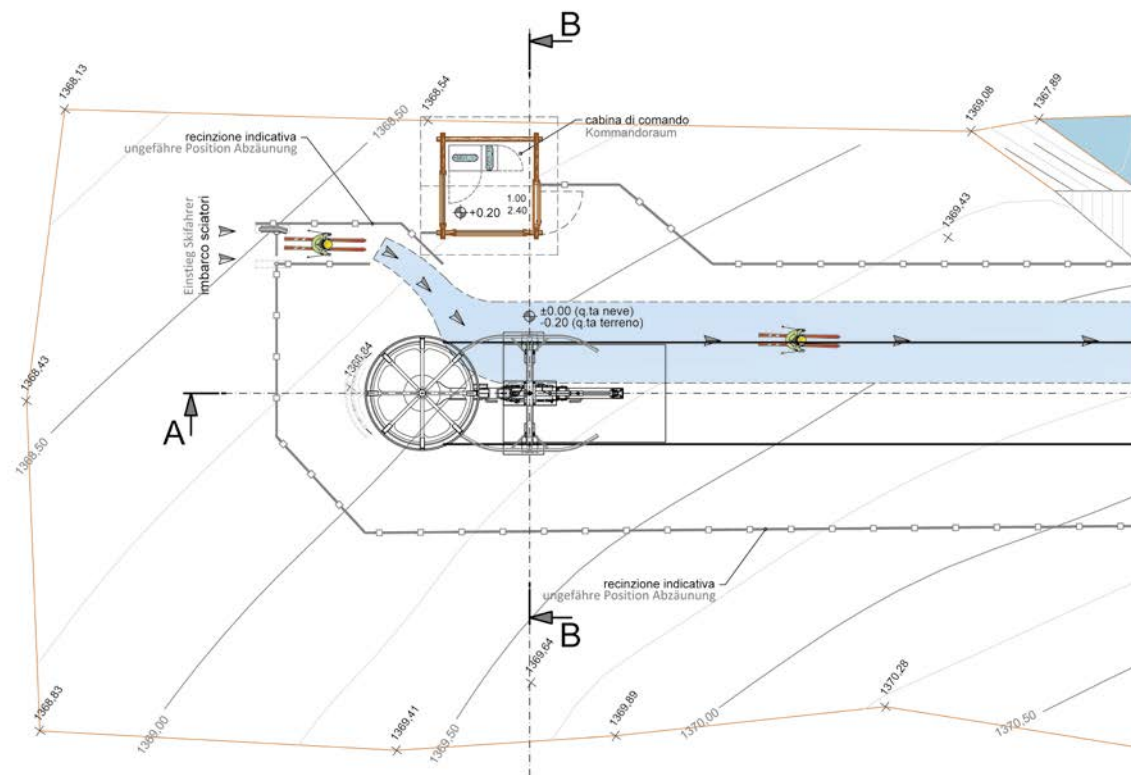




SL1 WEISSENBACH

Weissenbach / IT

Inclined length	311 m	Power	25 kW
Vertical rise	61 m	Total number of vehicles	53
Transport capacity	900 p/h	Total number of towers	3



Successes 2016



Successes 2016

TD32 EISGRATBAHN I
Neustift (Stubai) / AT

	2437 m
	594 m
	3014 p/h
	997 kW
	25
	4

GD10 PIZZALTO - GRAVARE
Roccaraso / IT

	1547 m
	94 m
	2800 p/h
	470 kW
	58
	13

GD10 DORFBAHN GERLOS II
Gerlos / AT

	1466 m
	494 m
	2413 p/h
	510 kW
	41
	12

GD8 ARABBA - PORTADOS
Livinallongo / IT

	1439 m
	492 m
	3000 p/h
	690 kW
	50
	10

CD8C ENZIAN
Ratschings / IT

	816 m
	242 m
	2800 p/h
	612 kW
	37
	9

CD6C BIERENWANG
Oberstdorf / DE

	759 m
	231 m
	2400 p/h
	300 kW
	39
	8

TD32 EISGRATBAHN II
Neustift (Stubai) / AT

	2249 m
	594 m
	3014 p/h
	997 kW
	23
	3

GD10 GRAVARE -
TOPPE DEL TESORO
Roccaraso / IT

	1567 m
	492 m
	2800 p/h
	660 kW
	50
	11

GD10 ECATEPEC I
Ecatepec / MX

	2901 m
	52 m
	3000 p/h
	692 kW
	107
	20

GD8 CABARCENO I
Cabarceno / ES

	3831 m
	288 m
	1250 p/h
	335 kW
	38
	22

CD8C GRAN PARADISO
Plan De Gralba / IT

	1007 m
	231 m
	2800 p/h
	400 kW
	45
	10

CD6 CHARVIN EXPRESS
Saint Jean d'Arves / FR

	1633 m
	363 m
	3000 p/h
	566 kW
	89
	14

GD10 CASTELIR - LE FASSANE
Predazzo / IT

	1437 m
	240 m
	2600 p/h
	390 kW
	46
	8

GD10 PFANNSPITZE
Plose - Brixen / IT

	1715 m
	554 m
	1800 p/h
	650 kW
	35
	11

GD10 ECATEPEC II
Ecatepec / MX

	1787 m
	242 m
	3000 p/h
	640 kW
	75
	16

GD8 CABARCENO II
Cabarceno / ES

	1069 m
	101 m
	1250 p/h
	168 kW
	22
	6

CD8C BURGSTALLALMBAHN
Schladming / AT

	1007 m
	336 m
	2800 p/h
	468 kW
	37
	9

CD6 DES ARCELLINS
Val Cenis / FR

	1940 m
	649 m
	2457 p/h
	665 kW
	85
	17

GD10 LE FASSANE - LA MOREA
Predazzo / IT

	1059 m
	174 m
	2600 p/h
	350 kW
	34
	7

GD10 DORFBAHN GERLOS I
Gerlos / AT

	1134 m
	322 m
	2413 p/h
	418 kW
	38
	11

GD10 AWANA SKYWAY
Genting / MY

	2642 m
	630 m
	3600 p/h
	1298 kW
	142
	22

TMX6-8 LANER
Obereggen / IT

	465 m
	98 m
	3000 p/h
	440 kW
	42
	4





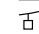

CD8 KUNGSLIFTEN
Kungsberget / SE

	970 m
	184 m
	4000 p/h
	400 kW
	61
	11


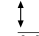


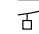
CD6 LA PARSA
Chamonix / FR

	1157 m
	293 m
	2964 p/h
	490 kW
	64
	11


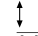


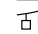

CD6 VOIE LACTÉE
Le Corbier / FR

	1303 m
	347 m
	3000 p/h
	481 kW
	72
	9



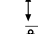
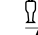
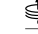
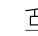
CD6 STÖTEN
Sälen / SE

	1725 m
	304 m
	2800 p/h
	440 kW
	79
	15

SL1 BERGERLIFT
Rein in Taufers / IT

	307 m
	88 m
	720 p/h
	26 kW
	40
	3

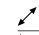
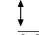


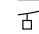
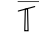
SL1 LA JOUE
(EX ROC D'AUROUZE)
Superdevoluy La Joue du Loup / FR

	1072 m
	235 m
	900 p/h
	110 kW
	182
	10

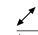

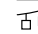

CD6C SKIHYTTA EKSPRESS
Trysil / NO

	1356 m
	289 m
	2800 p/h
	400 kW
	75
	12

CD4C CAMBASI I
Ordu / TR

	1104 m
	204 m
	1200 p/h
	175 kW
	40
	7



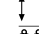

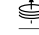
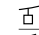
SL1 DELLA FAGGETA
Sarnano / IT

	315 m
	104 m
	720 p/h
	28 kW
	52
	3

SL1 TK2000
Chamonix / FR

	167 m
	31 m
	900 p/h
	12 kW
	36
	2

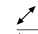
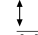


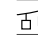

CD6C CZARNA GORA
EXPRESS
Sienna / PL

	1279 m
	369 m
	3000 p/h
	680 kW
	66
	11

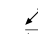
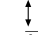


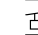

CD4C CAMBASI II
Ordu / TR

	1169 m
	245 m
	1500 p/h
	208 kW
	52
	7

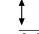


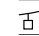
SL1 GASSE
Ridnaun / IT

	563 m
	108 m
	900 p/h
	52 kW
	90
	6

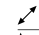
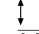
MM100 PISAMOVER
Pisa / IT

	1760 m
	6 m
	1132 p/h
	1000 kW
	2
	0

CD6C HAMRAFJÄLLET
Tänn dalen / SE

	725 m
	176 m
	2600 p/h
	310 kW
	40
	9

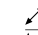
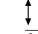


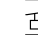

SL2 HAMRAFJÄLLET
Tänn dalen / SE





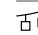

	805 m
	165 m
	1200 p/h
	90 kW
	84
	10





SL1 WEISSENBACH
Weissenbach / IT

	311 m
	61 m
	900 p/h
	25 kW
	53
	3

IE25 PIAZZETTA S. STEFANO
Verona / IT

	160 m
	55 m
	300 p/h
	30 kW
	1
	0

	Inclined length
	Vertical rise
	Transport capacity
	Power
	Total number of vehicles
	Total number of towers

	Winter Sports
	Urban
	Tourism
	Material

LEITNER ropeways



Sterzing (Italy)



Sterzing (Italy)



Telfs (Austria)



Montmélian (France)



Grand Junction (USA)



Stará Lúbovňa (Slovakia)



